

Rb
Mouse Monoclonal antibody(Mab)
Catalog # AD80111

Specification

Rb - Product info

Application	IHC-P
Primary Accession	P06400
Reactivity	Human
Host	Mouse
Clonality	Monoclonal
Calculated MW	106159

Rb - Additional info

Gene ID	5925
Gene Name	RB1
Other Names	
Retinoblastoma-associated protein, p105-Rb, p110-RB1, pRb, Rb, pp110, RB1	

Dilution

IHC-P~~Ready-to-use

Storage	This product is stored at 2-8 °C, please use it within the expiration date.
Precautions	Rb Gene Protein Antibody is for research use only and not for use in diagnostic or therapeutic procedures.

Rb - Protein Information

Name RB1

Function	Key regulator of entry into cell division that acts as a tumor suppressor. Promotes G0-G1 transition when phosphorylated by CDK3/cyclin-C. Acts as a transcription repressor of E2F1 target genes. The underphosphorylated, active form of RB1 interacts with E2F1 and represses its transcription activity, leading to cell cycle arrest. Directly involved in heterochromatin formation by maintaining overall chromatin structure and, in particular, that of constitutive heterochromatin by stabilizing histone methylation. Recruits and targets histone methyltransferases SUV39H1, KMT5B and KMT5C, leading to epigenetic
-----------------	--

transcriptional repression. Controls histone H4 'Lys-20' trimethylation. Inhibits the intrinsic kinase activity of TAF1. Mediates transcriptional repression by SMARCA4/BRG1 by recruiting a histone deacetylase (HDAC) complex to the c-FOS promoter. In resting neurons, transcription of the c-FOS promoter is inhibited by BRG1-dependent recruitment of a phospho-RB1-HDAC1 repressor complex. Upon calcium influx, RB1 is dephosphorylated by calcineurin, which leads to release of the repressor complex (By similarity).

Nucleus.

Expressed in the retina.

Cellular Location

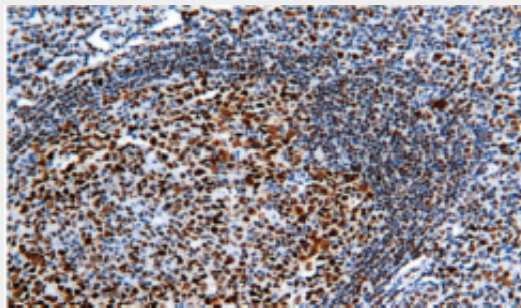
Tissue Location

Rb - Protocols

Provided below are standard protocols that you may find useful for product applications.

- [Western Blot](#)
- [Blocking Peptides](#)
- [Dot Blot](#)
- [Immunohistochemistry](#)
- [Immunofluorescence](#)
- [Immunoprecipitation](#)
- [Flow Cytometry](#)
- [Cell Culture](#)

Rb - Images



Tonsil