

MUC-1
Mouse Monoclonal antibody(Mab)
Catalog # AD80095

Specification

MUC-1 - Product info

Application	IHC-P, IHC
Primary Accession	P15941
Reactivity	Human
Host	Mouse
Clonality	Monoclonal
Calculated MW	122102

MUC-1 - Additional info

Gene ID	4582
Gene Name	MUC1

Other Names

Mucin-1, MUC-1, Breast carcinoma-associated antigen DF3, Cancer antigen 15-3, CA 15-3, Carcinoma-associated mucin, Episialin, H23AG, Krebs von den Lungen-6, KL-6, PEMT, Peanut-reactive urinary mucin, PUM, Polymorphic epithelial mucin, PEM, Tumor-associated epithelial membrane antigen, EMA, Tumor-associated mucin, CD227, Mucin-1 subunit alpha, MUC1-NT, MUC1-alpha, Mucin-1 subunit beta, MUC1-beta, MUC1-CT, MUC1, PUM

Dilution

IHC-P~~Ready-to-use
IHC~~Ready-to-use

Storage	This product is stored at 2-8 °C, please use it within the expiration date.
Precautions	MUC-1 Antibody is for research use only and not for use in diagnostic or therapeutic procedures.

MUC-1 - Protein Information

Name MUC1

Synonyms	PUM
Function	The alpha subunit has cell adhesive properties. Can act both as an adhesion and an anti-adhesion protein. May provide a protective layer on epithelial cells against bacterial and enzyme attack.
Cellular Location	Apical cell membrane; Single- pass type I membrane protein. Note=Exclusively located in the apical domain of the plasma membrane of highly polarized epithelial cells. After endocytosis, internalized and

Tissue Location

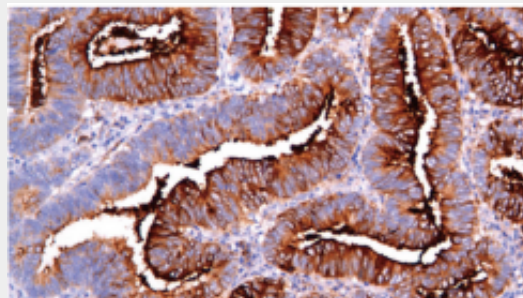
recycled to the cell membrane. Located to microvilli and to the tips of long filopodial protusions Isoform Y: Secreted. Mucin-1 subunit beta: Cell membrane. Cytoplasm. Nucleus. Note=On EGF and PDGFRB stimulation, transported to the nucleus through interaction with CTNNB1, a process which is stimulated by phosphorylation. On HRG stimulation, colocalizes with JUP/gamma-catenin at the nucleus
Expressed on the apical surface of epithelial cells, especially of airway passages, breast and uterus. Also expressed in activated and unactivated T-cells. Overexpressed in epithelial tumors, such as breast or ovarian cancer and also in non-epithelial tumor cells. Isoform Y is expressed in tumor cells only.

MUC-1 - Protocols

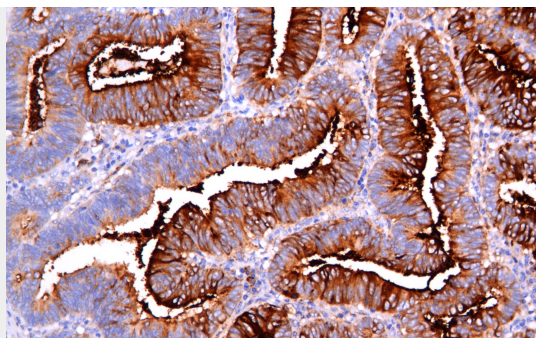
Provided below are standard protocols that you may find useful for product applications.

- [Western Blot](#)
- [Blocking Peptides](#)
- [Dot Blot](#)
- [Immunohistochemistry](#)
- [Immunofluorescence](#)
- [Immunoprecipitation](#)
- [Flow Cytometry](#)
- [Cell Culture](#)

MUC-1 - Images



Colon cancer



Immunohistochemical analysis of paraffin-embedded colorectal carcinoma; tissue using AD80095 performed on the Abcarta® FAIP-30 Fully automated IHC platform. Tissue was fixed with formaldehyde at room temperature, antigen retrieval was by heat mediation with a Citrate buffer (pH6. 0). Samples were incubated with primary antibody(Ready-to-use) for 15 min at room temperature. AmpSee™ Detection Systems [Abcepta:AR005] was used as the secondary antibody.