

**Ksp-Cadherin**  
**Rabbit Monoclonal antibody(Mab)**  
**Catalog # AD80088****Specification**

---

**Ksp-Cadherin - Product info**

Application	<b>IHC-P, IHC</b>
Primary Accession	<a href="#">O75309</a>
Reactivity	<b>Human</b>
Host	<b>Rabbit</b>
Clonality	<b>Monoclonal</b>
Calculated MW	<b>89923</b>

**Ksp-Cadherin - Additional info**

Gene ID	<b>1014</b>
Gene Name	<b>CDH16</b>
<b>Other Names</b>	
Cadherin-16, Kidney-specific cadherin, Ksp-cadherin, CDH16	

**Dilution**

IHC-P~~Ready-to-use  
IHC~~Ready-to-use

**Storage**

Maintain refrigerated at 2-8°C

**Precautions**

**Ksp-Cadherin Antibody is for research use only and not for use in diagnostic or therapeutic procedures.**

**Ksp-Cadherin - Protein Information**

**Name** CDH16

**Function**

**Cadherins are calcium-dependent cell adhesion proteins. They preferentially interact with themselves in a homophilic manner in connecting cells; cadherins may thus contribute to the sorting of heterogeneous cell types. Cell membrane; Single-pass type I membrane protein  
Kidney specific.**

**Cellular Location**

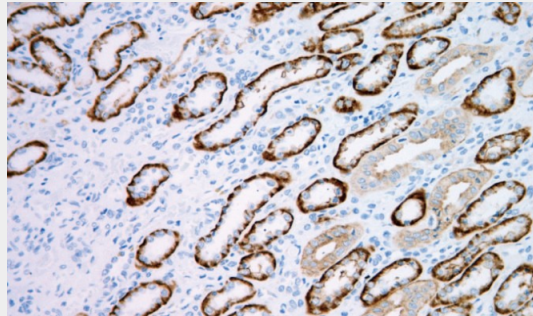
**Tissue Location**

**Ksp-Cadherin - Protocols**

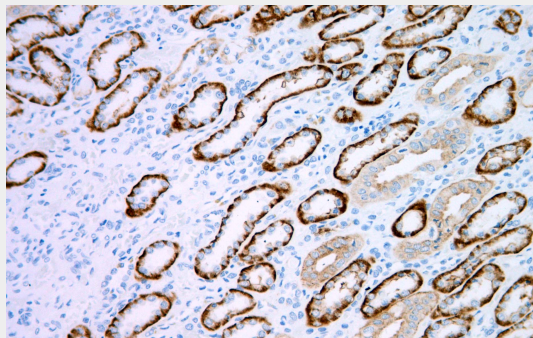
Provided below are standard protocols that you may find useful for product applications.

- [Western Blot](#)
- [Blocking Peptides](#)
- [Dot Blot](#)
- [Immunohistochemistry](#)
- [Immunofluorescence](#)
- [Immunoprecipitation](#)
- [Flow Cytometry](#)
- [Cell Culture](#)

### Ksp-Cadherin - Images



Kidney tissue



Immunohistochemical analysis of paraffin-embedded human kidney tissue using AD80088 performed on the Abcarta® FAIP-30 Fully automated IHC platform. Tissue was fixed with formaldehyde at room temperature, antigen retrieval was by heat mediation with a Citrate buffer (pH6.0). Samples were incubated with primary antibody (Ready-to-use) for 15 min at room temperature. AmpSee™ Detection Systems [Abcepta:AR005] was used as the secondary antibody.