

Fascin
Mouse Monoclonal antibody(Mab)
Catalog # AD80075

Specification

Fascin - Product info

Application	IHC-P, IHC
Primary Accession	Q16658
Reactivity	Human
Host	Mouse
Clonality	Monoclonal
Calculated MW	54530

Fascin - Additional info

Gene ID	6624
Gene Name	FSCN1

Other Names
Fascin, 55 kDa actin-bundling protein, Singed-like protein, p55, FSCN1, FAN1, HSN, SNL

Dilution

IHC-P~~Ready-to-use
IHC~~Ready-to-use

Storage

Maintain refrigerated at 2-8°C

Precautions

Fascin Antibody is for research use only and not for use in diagnostic or therapeutic procedures.

Fascin - Protein Information

Name FSCN1

Synonyms
Function

FAN1, HSN, SNL
Organizes filamentous actin into bundles with a minimum of 4.1:1 actin/fascin ratio. Plays a role in the organization of actin filament bundles and the formation of microspikes, membrane ruffles, and stress fibers. Important for the formation of a diverse set of cell protrusions, such as filopodia, and for cell motility and migration.

Cellular Location

Cytoplasm, cytosol Cytoplasm, cytoskeleton. Cytoplasm, cytoskeleton, stress fiber. Cell projection, filopodium. Cell projection, invadopodium. Cell

Tissue Location

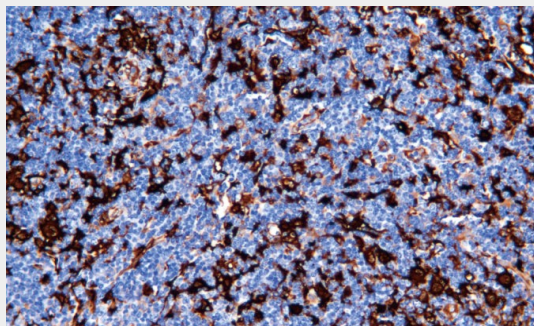
projection, microvillus. Cell junction.
Note=Colocalized with RUFY3 and F-actin at filipodia of the axonal growth cone. Colocalized with DBN1 and F-actin at the transitional domain of the axonal growth cone (By similarity).
{ECO:0000250|UniProtKB:Q61553, ECO:0000269|PubMed:21706053}
Ubiquitous.

Fascin - Protocols

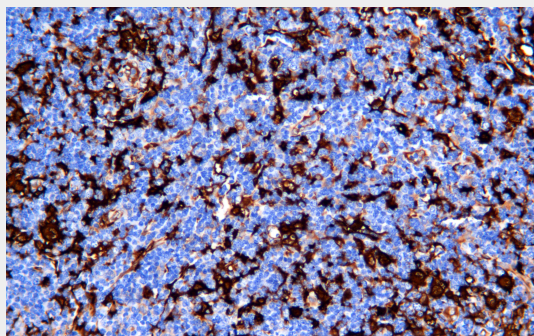
Provided below are standard protocols that you may find useful for product applications.

- [Western Blot](#)
- [Blocking Peptides](#)
- [Dot Blot](#)
- [Immunohistochemistry](#)
- [Immunofluorescence](#)
- [Immunoprecipitation](#)
- [Flow Cytometry](#)
- [Cell Culture](#)

Fascin - Images



Hodgkins lymphoma



Immunohistochemical analysis of paraffin-embedded hodgkin lymphoma tissue using AD80075 performed on the Abcarta® FAIP-30 Fully automated IHC platform. Tissue was fixed with formaldehyde at room temperature, antigen retrieval was by heat mediation with a Citrate buffer (pH6.0). Samples were incubated with primary antibody (Ready-to-use) for 15 min at room temperature. AmpSee™ Detection Systems [Abcepta:AR005] was used as the secondary antibody.