

**E-Cadherin**  
Mouse Monoclonal antibody(Mab)  
Catalog # AD80073

## Specification

---

### E-Cadherin - Product info

Application	IHC-P, IHC
Primary Accession	<a href="#">P12830</a>
Reactivity	Human
Host	Mouse
Clonality	Monoclonal
Calculated MW	97456

### E-Cadherin - Additional info

Gene ID	999
Gene Name	CDH1

#### Other Names

Cadherin-1, CAM 120/80, Epithelial cadherin, E-cadherin, Uvomorulin, CD324, E-Cad/CTF1, E-Cad/CTF2, E-Cad/CTF3, CDH1, CDHE, UVO

#### Dilution

IHC-P~~Ready-to-use  
IHC~~Ready-to-use

Storage	This product is stored at 2-8 °C, please use it within the expiration date.
Precautions	E-Cadherin Antibody is for research use only and not for use in diagnostic or therapeutic procedures.

### E-Cadherin - Protein Information

Name CDH1 ([HGNC:1748](#))

Synonyms  
Function

CDHE, UVO  
Cadherins are calcium-dependent cell adhesion proteins (PubMed:[11976333](#)). They preferentially interact with themselves in a homophilic manner in connecting cells; cadherins may thus contribute to the sorting of heterogeneous cell types. CDH1 is involved in mechanisms regulating cell-cell adhesions, mobility and proliferation of epithelial cells (PubMed:[11976333](#)). Has a potent invasive suppressor role. It is a ligand for integrin alpha-E/beta-7.  
Cell junction. Cell membrane; Single-pass

Cellular Location

type I membrane protein Endosome. Golgi apparatus, trans-Golgi network.  
Note=Colocalizes with DLGAP5 at sites of cell-cell contact in intestinal epithelial cells. Anchored to actin microfilaments through association with alpha-, beta- and gamma-catenin. Sequential proteolysis induced by apoptosis or calcium influx, results in translocation from sites of cell-cell contact to the cytoplasm. Colocalizes with RAB11A endosomes during its transport from the Golgi apparatus to the plasma membrane  
Non-neural epithelial tissues.

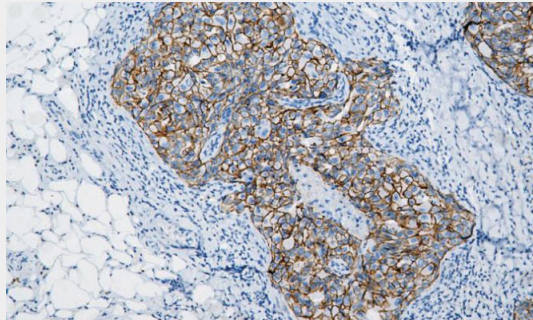
Tissue Location

### E-Cadherin - Protocols

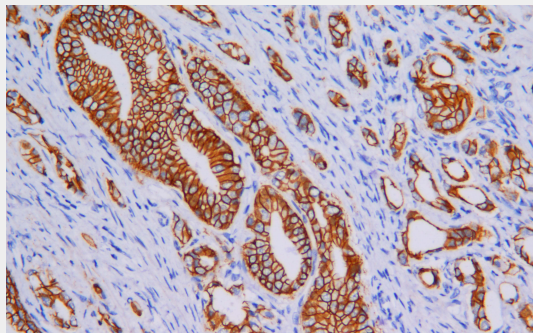
Provided below are standard protocols that you may find useful for product applications.

- [Western Blot](#)
- [Blocking Peptides](#)
- [Dot Blot](#)
- [Immunohistochemistry](#)
- [Immunofluorescence](#)
- [Immunoprecipitation](#)
- [Flow Cytometry](#)
- [Cell Culture](#)

### E-Cadherin - Images



Breast duct carcinoma



Immunohistochemical analysis of paraffin-embedded prostatic cancer tissue using AD80073 performed on the Abcarta® FAIP-30 Fully automated IHC platform. Tissue was fixed with

formaldehyde at room temperature, antigen retrieval was by heat mediation with a Citrate buffer (pH6.0). Samples were incubated with primary antibody (Ready-to-use) for 15 min at room temperature. AmpSee™ Detection Systems [Abcepta:AR005] was used as the secondary antibody.