

CK16
Mouse Monoclonal antibody(Mab)
Catalog # AD80070

Specification

CK16 - Product info

Application	IHC-P, IHC
Primary Accession	P08779
Reactivity	Human
Host	Mouse
Clonality	Monoclonal
Calculated MW	51268

CK16 - Additional info

Gene ID	3868
Gene Name	KRT16
Other Names	
Keratin, type I cytoskeletal 16, Cytokeratin-16, CK-16, Keratin-16, K16, KRT16, KRT16A	

Dilution

IHC-P~~Ready-to-use
IHC~~Ready-to-use

Storage	This product is stored at 2-8 °C, please use it within the expiration date.
Precautions	CK16 Antibody is for research use only and not for use in diagnostic or therapeutic procedures.

CK16 - Protein Information

Name KRT16

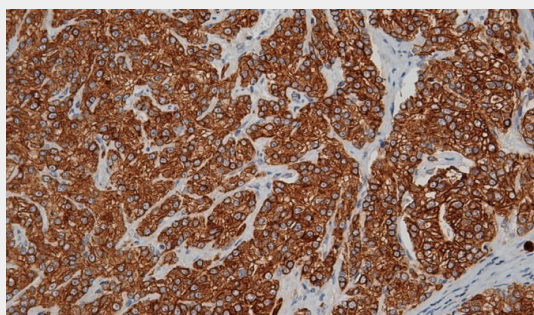
Synonyms	KRT16A
Function	Epidermis-specific type I keratin that plays a key role in skin. Acts as a regulator of innate immunity in response to skin barrier breach: required for some inflammatory checkpoint for the skin barrier maintenance.
Tissue Location	Expressed in the hair follicle, nail bed and in mucosal stratified squamous epithelia and, suprabasally, in oral epithelium and palmoplantar epidermis. Also found in luminal cells of sweat and mammary gland ducts

CK16 - Protocols

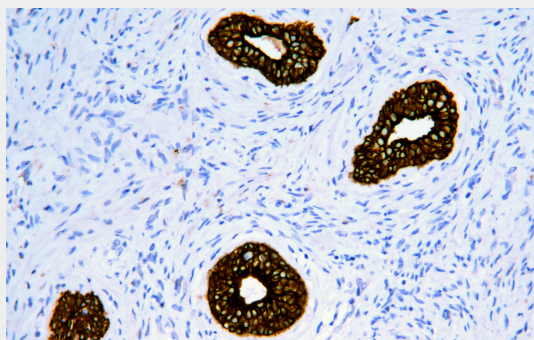
Provided below are standard protocols that you may find useful for product applications.

- [Western Blot](#)
- [Blocking Peptides](#)
- [Dot Blot](#)
- [Immunohistochemistry](#)
- [Immunofluorescence](#)
- [Immunoprecipitation](#)
- [Flow Cytometry](#)
- [Cell Culture](#)

CK16 - Images



Prostate cancer



Immunohistochemical analysis of paraffin-embedded prostatic cancer tissue using AD80070 performed on the Abcarta® FAIP-30 Fully automated IHC platform. Tissue was fixed with formaldehyde at room temperature, antigen retrieval was by heat mediation with a EDTA buffer (pH9.0). Samples were incubated with primary antibody (Ready-to-use) for 15 min at room temperature. AmpSee™ Detection Systems [Abcepta:AR005] was used as the secondary antibody.