

**CgA**  
**Mouse Monoclonal antibody(Mab)**  
**Catalog # AD80069**

## Specification

---

### CgA - Product info

Application	IHC-P, IHC
Primary Accession	<a href="#">P01215</a>
Reactivity	Human
Host	Mouse
Clonality	Monoclonal
Calculated MW	13075

### CgA - Additional info

Gene ID	1113
Gene Name	CHGA

#### Other Names

Glycoprotein hormones alpha chain, Anterior pituitary glycoprotein hormones common subunit alpha, Choriogonadotropin alpha chain, Chorionic gonadotrophin subunit alpha, CG-alpha, Follicle-stimulating hormone alpha chain, FSH-alpha, Follitropin alpha chain, Luteinizing hormone alpha chain, LSH-alpha, Lutropin alpha chain, Thyroid-stimulating hormone alpha chain, TSH-alpha, Thyrotropin alpha chain, CGA

#### Dilution

IHC-P~~Ready-to-use  
IHC~~Ready-to-use

#### Storage

Maintain refrigerated at 2-8°C

#### Precautions

**Chromogranin Antibody is for research use only and not for use in diagnostic or therapeutic procedures.**

### CgA - Protein Information

#### Name CGA

#### Function

**Pancreastatin: Strongly inhibits glucose induced insulin release from the pancreas. Serpinin: Regulates granule biogenesis in endocrine cells by up-regulating the transcription of protease nexin 1 (SERPINE2) via a cAMP-PKA-SP1 pathway. This leads to inhibition of granule protein degradation in the Golgi complex which in turn promotes granule formation. Cytoplasmic vesicle, secretory vesicle**

#### Cellular Location

**lumen. Cytoplasmic vesicle, secretory vesicle membrane. Secreted.**  
**Note=Associated with the secretory granule membrane through direct interaction to SCG3 that in turn binds to cholesterol-enriched lipid rafts in intragranular conditions.**  
**GE-25 is found in the brain.**

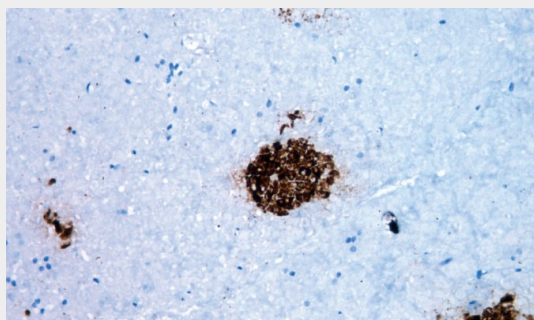
Tissue Location

### **CgA - Protocols**

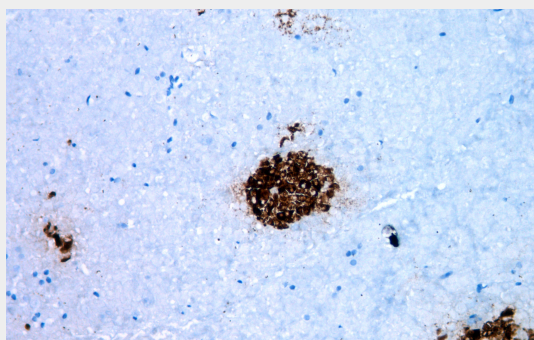
Provided below are standard protocols that you may find useful for product applications.

- [Western Blot](#)
- [Blocking Peptides](#)
- [Dot Blot](#)
- [Immunohistochemistry](#)
- [Immunofluorescence](#)
- [Immunoprecipitation](#)
- [Flow Cytometry](#)
- [Cell Culture](#)

### **CgA - Images**



Pancreas



Immunohistochemical analysis of paraffin-embedded human pancreas tissue using AD80069 performed on the Abcarta® FAIP-30 Fully automated IHC platform. Tissue was fixed with formaldehyde at room temperature, antigen retrieval was by heat mediation with a Citrate buffer (pH6. 0). Samples were incubated with primary antibody(Ready-to-use) for 15 min at room temperature. AmpSee™ Detection Systems□Abcepta:AR005□ was used as the secondary antibody.