

CD43
Mouse Monoclonal antibody(Mab)
Catalog # AD80063

Specification

CD43 - Product info

Application	IHC-P, IHC
Primary Accession	P16150
Reactivity	Human
Host	Mouse
Clonality	Monoclonal
Calculated MW	40322

CD43 - Additional info

Gene ID	6693
Gene Name	SPN

Other Names

Leukosialin, GPL115, Galactoglycoprotein, GALGP, Leukocyte sialoglycoprotein, Sialophorin, CD43, CD43 cytoplasmic tail, CD43-ct, CD43ct, SPN, CD43

Dilution

IHC-P~~Ready-to-use
IHC~~Ready-to-use

Storage	This product is stored at 2-74 °C, please use it within the expiration date.
Precautions	CD43 Antibody is for research use only and not for use in diagnostic or therapeutic procedures.

CD43 - Protein Information

Name SPN

Synonyms	CD43
Function	Predominant cell surface sialoprotein of leukocytes which regulates multiple T-cell functions, including T-cell activation, proliferation, differentiation, trafficking and migration. Positively regulates T-cell trafficking to lymph-nodes via its association with ERM proteins (EZR, RDX and MSN) (By similarity). Negatively regulates Th2 cell differentiation and predisposes the differentiation of T-cells towards a Th1 lineage commitment. Promotes the expression of IFN-gamma by T-cells during T-cell receptor (TCR)

Cellular Location

Tissue Location

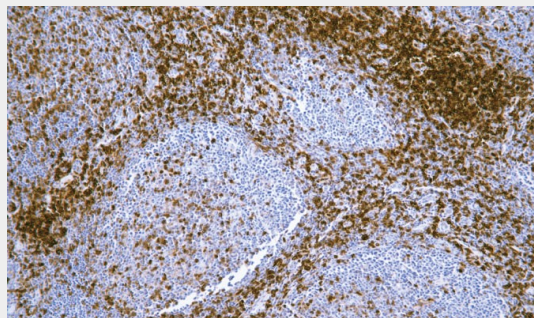
activation of naive cells and induces the expression of IFN-gamma by CD4(+) T-cells and to a lesser extent by CD8(+) T-cells (PubMed:[18036228](#)). Plays a role in preparing T- cells for cytokine sensing and differentiation into effector cells by inducing the expression of cytokine receptors IFNGR and IL4R, promoting IFNGR and IL4R signaling and by mediating the clustering of IFNGR with TCR (PubMed:[24328034](#)). Acts as a major E-selectin ligand responsible for Th17 cell rolling on activated vasculature and recruitment during inflammation. Mediates Th17 cells, but not Th1 cells, adhesion to E-selectin. Acts as a T-cell counter-receptor for SIGLEC1 (By similarity). Membrane; Single-pass type I membrane protein. Cell projection, microvillus {ECO:0000250|UniProtKB:P13838}. Cell projection, uropodium {ECO:0000250|UniProtKB:P15702}. Note=Localizes to the uropodium and microvilli via its interaction with ERM proteins (EZR, RDX and MSN). {ECO:0000250|UniProtKB:P13838, ECO:0000250|UniProtKB:P15702} Cell surface of thymocytes, T-lymphocytes, neutrophils, plasma cells and myelomas

CD43 - Protocols

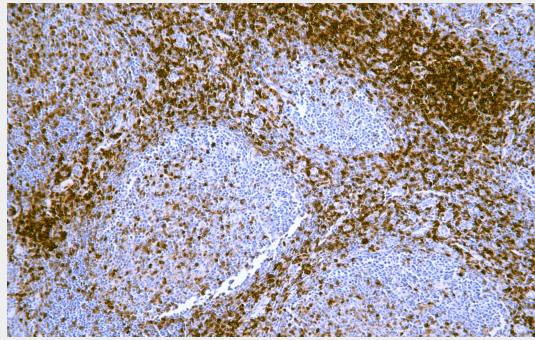
Provided below are standard protocols that you may find useful for product applications.

- [Western Blot](#)
- [Blocking Peptides](#)
- [Dot Blot](#)
- [Immunohistochemistry](#)
- [Immunofluorescence](#)
- [Immunoprecipitation](#)
- [Flow Cytometry](#)
- [Cell Culture](#)

CD43 - Images



Tonsil



Immunohistochemical analysis of paraffin-embedded human tonsil tissue using AD80063 performed on the Abcarta® FAIP-30 Fully automated IHC platform. Tissue was fixed with formaldehyde at room temperature, antigen retrieval was by heat mediation with a EDTA buffer (pH9.0). Samples were incubated with primary antibody (Ready-to-use) for 15 min at room temperature. AmpSee™ Detection Systems [Abcepta:AR005] was used as the secondary antibody.