

CD13
Rabbit Monoclonal antibody(Mab)
Catalog # AD80057

Specification

CD13 - Product info

Application	IHC-P, IHC
Primary Accession	P15144
Reactivity	Human
Host	Rabbit
Clonality	Monoclonal
Calculated MW	109540

CD13 - Additional info

Gene ID	290
Gene Name	ANPEP

Other Names

Aminopeptidase N, AP-N, hAPN, 3.4.11.2, Alanyl aminopeptidase, Aminopeptidase M, AP-M, Microsomal aminopeptidase, Myeloid plasma membrane glycoprotein CD13, gp150, CD13, ANPEP, APN, CD13, PEPN

Dilution

IHC-P~~Ready-to-use
IHC~~Ready-to-use

Storage	This product is stored at 2-8 °C, please use it within the expiration date.
Precautions	CD13 Antibody is for research use only and not for use in diagnostic or therapeutic procedures.

CD13 - Protein Information

Name ANPEP

Synonyms
Function

APN, CD13, PEPN
Broad specificity aminopeptidase which plays a role in the final digestion of peptides generated from hydrolysis of proteins by gastric and pancreatic proteases. Also involved in the processing of various peptides including peptide hormones, such as angiotensin III and IV, neuropeptides, and chemokines. May also be involved the cleavage of peptides bound to major histocompatibility complex class II molecules of antigen presenting cells. May have a role in angiogenesis and

Cellular Location

promote cholesterol crystallization. Cell membrane; Single-pass type II membrane protein. Note=Also found as a soluble form

Tissue Location

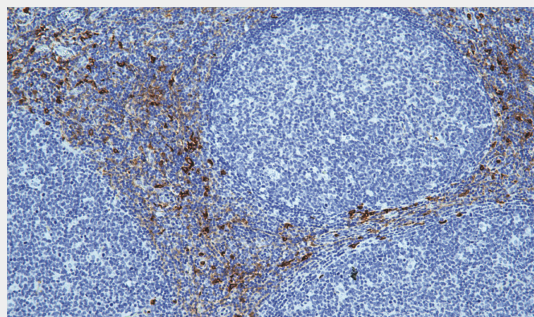
Expressed in epithelial cells of the kidney, intestine, and respiratory tract; granulocytes, monocytes, fibroblasts, endothelial cells, cerebral pericytes at the blood- brain barrier, synaptic membranes of cells in the CNS. Also expressed in endometrial stromal cells, but not in the endometrial glandular cells. Found in the vasculature of tissues that undergo angiogenesis and in malignant gliomas and lymph node metastases from multiple tumor types but not in blood vessels of normal tissues. A soluble form has been found in plasma. It is found to be elevated in plasma and effusions of cancer patients

CD13 - Protocols

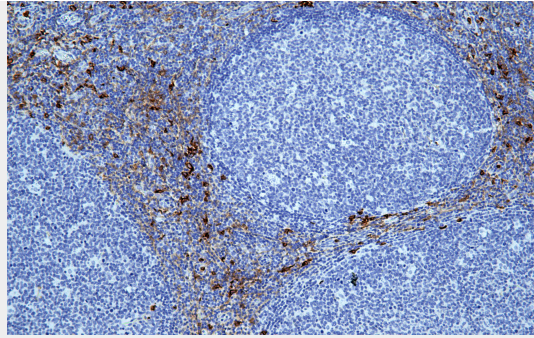
Provided below are standard protocols that you may find useful for product applications.

- [Western Blot](#)
- [Blocking Peptides](#)
- [Dot Blot](#)
- [Immunohistochemistry](#)
- [Immunofluorescence](#)
- [Immunoprecipitation](#)
- [Flow Cytometry](#)
- [Cell Culture](#)

CD13 - Images



Tonsil



Immunohistochemical analysis of paraffin-embedded human tonsil tissue using AD80057 performed on the Abcarta® FAIP-30 Fully automated IHC platform. Tissue was fixed with formaldehyde at room temperature, antigen retrieval was by heat mediation with a Citrate buffer (pH6. 0). Samples were incubated with primary antibody(Ready-to-use) for 15 min at room temperature. AmpSee™ Detection Systems [Abcepta:AR005] was used as the secondary antibody.