

**Bax**  
**Rabbit Monoclonal antibody(Mab)**  
**Catalog # AD80053**

## Specification

---

### Bax - Product info

Application	IHC-P, IHC
Primary Accession	<a href="#">Q07812</a>
Reactivity	Human
Host	Rabbit
Clonality	Monoclonal
Calculated MW	21184

### Bax - Additional info

Gene ID	581
Gene Name	BAX
<b>Other Names</b>	
Apoptosis regulator BAX, Bcl-2-like protein 4, Bcl2-L-4, BAX, BCL2L4	

### Dilution

IHC-P~~Ready-to-use  
IHC~~Ready-to-use

Storage	<b>This product is stored at 2-8 °C, please use it within the expiration date.</b>
Precautions	<b>Bax Antibody is for research use only and not for use in diagnostic or therapeutic procedures.</b>

### Bax - Protein Information

#### Name BAX

Synonyms	<b>BCL2L4</b>
Function	<b>Plays a role in the mitochondrial apoptotic process. Under normal conditions, BAX is largely cytosolic via constant retrotranslocation from mitochondria to the cytosol mediated by BCL2L1/Bcl-xL, which avoids accumulation of toxic BAX levels at the mitochondrial outer membrane (MOM) (PubMed:<a href="#">21458670</a>). Under stress conditions, undergoes a conformation change that causes translocation to the mitochondrion membrane, leading to the release of cytochrome c that then triggers apoptosis. Promotes activation of CASP3, and thereby</b>

Cellular Location

apoptosis.

**Isoform Alpha: Mitochondrion outer membrane; Single-pass membrane protein. Cytoplasm. Note=Colocalizes with 14-3-3 proteins in the cytoplasm. Under stress conditions, undergoes a conformation change that causes release from**

**JNK-phosphorylated 14-3-3 proteins and translocation to the mitochondrion membrane**

**Isoform Gamma: Cytoplasm. Expressed in a wide variety of tissues.**

**Isoform Psi is found in glial tumors.**

**Isoform Alpha is expressed in spleen, breast, ovary, testis, colon and brain, and at low levels in skin and lung.**

**Isoform Sigma is expressed in spleen, breast, ovary, testis, lung, colon, brain and at low levels in skin.**

**Isoform Alpha and isoform Sigma are expressed in pro- myelocytic leukemia, histiocytic lymphoma, Burkitt's lymphoma, T- cell lymphoma,**

**lymphoblastic leukemia, breast adenocarcinoma, ovary adenocarcinoma,**

**prostate carcinoma, prostate adenocarcinoma, lung carcinoma,**

**epidermoid carcinoma, small cell lung carcinoma and colon adenocarcinoma cell lines.**

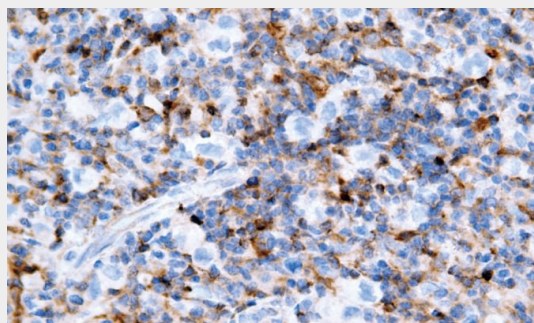
Tissue Location

**Bax - Protocols**

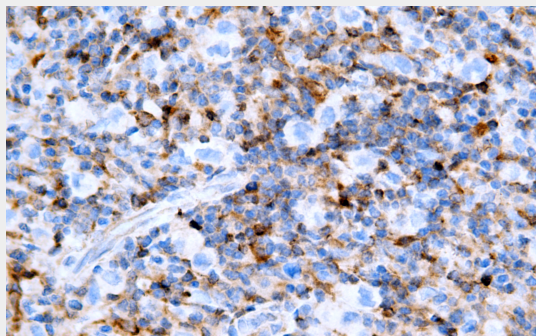
Provided below are standard protocols that you may find useful for product applications.

- [Western Blot](#)
- [Blocking Peptides](#)
- [Dot Blot](#)
- [Immunohistochemistry](#)
- [Immunofluorescence](#)
- [Immunoprecipitation](#)
- [Flow Cytometry](#)
- [Cell Culture](#)

**Bax - Images**



Hodgkins lymphoma



Immunohistochemical analysis of paraffin-embedded Hodgkin lymphoma tissue using AD80053 performed on the Abcarta® FAIP-30 Fully automated IHC platform. Tissue was fixed with formaldehyde at room temperature, antigen retrieval was by heat mediation with a EDTA buffer (pH 9.0). Samples were incubated with primary antibody (Ready-to-use) for 15 min at room temperature. AmpSee™ Detection Systems [Abcepta:AR005] was used as the secondary antibody.