

**PLAP**  
**Mouse Monoclonal antibody(Mab)**  
**Catalog # AD80036**

## Specification

---

### PLAP - Product info

Application	IHC-P, IHC
Primary Accession	<a href="#">P05187</a>
Reactivity	Human
Host	Mouse
Clonality	Monoclonal
Calculated MW	57954

### PLAP - Additional info

Gene ID	250
Gene Name	ALPP

#### Other Names

Alkaline phosphatase, placental type, 3.1.3.1, Alkaline phosphatase Regan isozyme, Placental alkaline phosphatase 1, PLAP-1, ALPP ([HGNC:439](http://www.genenames.org/cgi-bin/gene_symbol_report?hgnc_id=439))

#### Dilution

IHC-P~~Ready-to-use  
IHC~~Ready-to-use

#### Storage

**This product is stored at 2-8 °C, please use it within the expiration date.**

#### Precautions

**PLAP Antibody is for research use only and not for use in diagnostic or therapeutic procedures.**

### PLAP - Protein Information

Name ALPP ([HGNC:439](#))

#### Synonyms

PLAP

#### Cellular Location

Cell membrane; Lipid-anchor, GPI-anchor.

#### Tissue Location

Detected in placenta (at protein level).

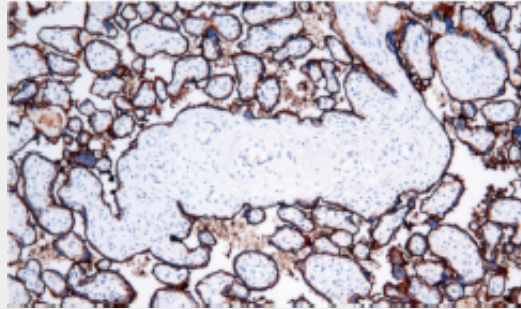
### PLAP - Protocols

Provided below are standard protocols that you may find useful for product applications.

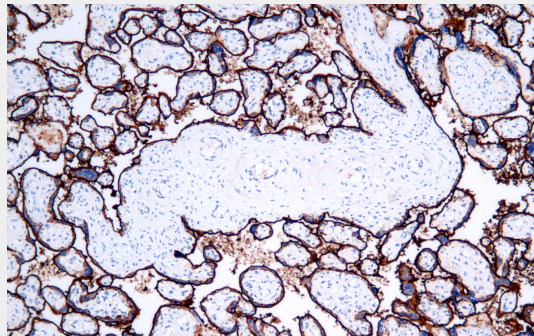
- [Western Blot](#)
- [Blocking Peptides](#)
- [Dot Blot](#)

- [Immunohistochemistry](#)
- [Immunofluorescence](#)
- [Immunoprecipitation](#)
- [Flow Cytometry](#)
- [Cell Culture](#)

#### PLAP - Images



Placenta



Immunohistochemical analysis of paraffin-embedded human placenta tissue using AD80036 performed on the Abcarta® FAIP-30 Fully automated IHC platform. Tissue was fixed with formaldehyde at room temperature, antigen retrieval was by heat mediation with a EDTA buffer (pH 9.0). Samples were incubated with primary antibody (Ready-to-use) for 15 min at room temperature. AmpSee™ Detection Systems [Abcepta:AR005] was used as the secondary antibody.