

Ep-CAM
Mouse Monoclonal antibody(Mab)
Catalog # AD80026

Specification

Ep-CAM - Product info

Application	IHC-P, IHC
Primary Accession	P16422
Reactivity	Human
Host	Mouse
Clonality	Monoclonal
Calculated MW	34932

Ep-CAM - Additional info

Gene ID	4072
Gene Name	EPCAM

Other Names

Epithelial cell adhesion molecule, Ep-CAM, Adenocarcinoma-associated antigen, Cell surface glycoprotein Trop-1, Epithelial cell surface antigen, Epithelial glycoprotein, EGP, Epithelial glycoprotein 314, EGP314, hEGP314, KS 1/4 antigen, KSA, Major gastrointestinal tumor-associated protein GA733-2, Tumor-associated calcium signal transducer 1, CD326, EPCAM, GA733-2, M1S2, M4S1, MIC18, TACSTD1, TROP1

Dilution

IHC-P~~Ready-to-use
IHC~~Ready-to-use

Storage

Maintain refrigerated at 2-8°C

Precautions

Ep-CAM Antibody is for research use only and not for use in diagnostic or therapeutic procedures.

Ep-CAM - Protein Information

Name EPCAM

Synonyms

GA733-2, M1S2, M4S1, MIC18, TACSTD1, TRO

Function

May act as a physical homophilic interaction molecule between intestinal epithelial cells (IECs) and intraepithelial lymphocytes (IELs) at the mucosal epithelium for providing immunological barrier as a first line of defense against mucosal infection. Plays a role in embryonic stem cells proliferation and

Cellular Location

differentiation. Up-regulates the expression of FABP5, MYC and cyclins A and E.

Tissue Location

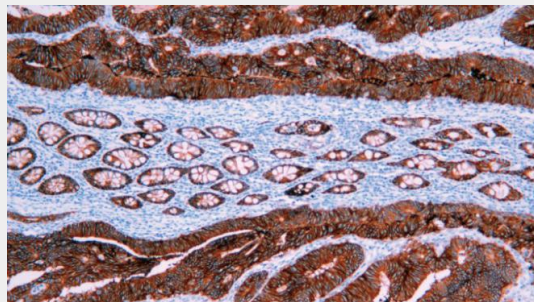
Lateral cell membrane; Single-pass type I membrane protein. Cell junction, tight junction. Note=Colocalizes with CLDN7 at the lateral cell membrane and tight junction
Highly and selectively expressed by undifferentiated rather than differentiated embryonic stem cells (ESC). Levels rapidly diminish as soon as ESC's differentiate (at protein levels). Expressed in almost all epithelial cell membranes but not on mesodermal or neural cell membranes. Found on the surface of adenocarcinoma.

Ep-CAM - Protocols

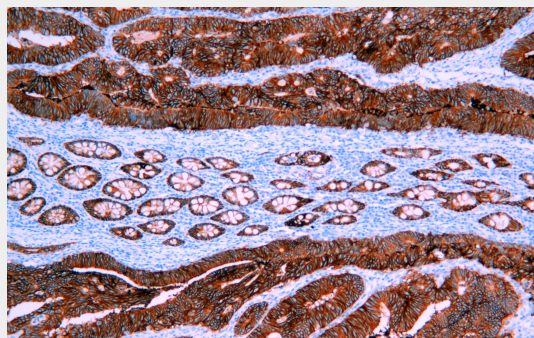
Provided below are standard protocols that you may find useful for product applications.

- [Western Blot](#)
- [Blocking Peptides](#)
- [Dot Blot](#)
- [Immunohistochemistry](#)
- [Immunofluorescence](#)
- [Immunoprecipitation](#)
- [Flow Cytometry](#)
- [Cell Culture](#)

Ep-CAM - Images



Colon cancer



Immunohistochemical analysis of paraffin-embedded colorectal carcinoma; tissue using AD80026 performed on the Abcarta® FAIP-30 Fully automated IHC platform. Tissue was fixed with formaldehyde at room temperature, antigen retrieval was by heat mediation with a Citrate buffer (pH 6.0). Samples were incubated with primary antibody (Ready-to-use) for 15 min at room temperature. AmpSee™ Detection Systems [Abcepta:AR005] was used as the secondary antibody.