

CK20
Rabbit Monoclonal antibody(Mab)
Catalog # AD80024

Specification

CK20 - Product info

Application	IHC-P, IHC
Primary Accession	P35900
Reactivity	Human
Host	Rabbit
Clonality	Monoclonal
Calculated MW	48487

CK20 - Additional info

Gene ID	54474
Gene Name	KRT20

Other Names
Keratin, type I cytoskeletal 20, Cytokeratin-20, CK-20, Keratin-20, K20, Protein IT, KRT20

Dilution

IHC-P~~Ready-to-use
IHC~~Ready-to-use

Storage	This product is stored at 2-8 °C, please use it within the expiration date.
Precautions	CK20 Antibody is for research use only and not for use in diagnostic or therapeutic procedures.

CK20 - Protein Information

Name KRT20

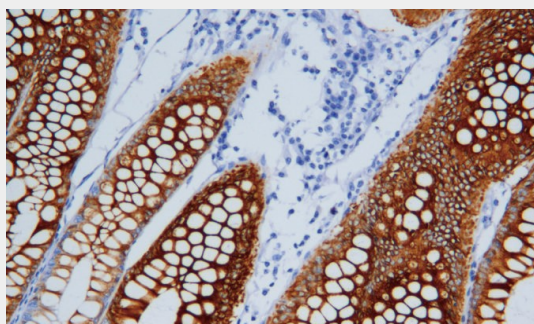
Function	Plays a significant role in maintaining keratin filament organization in intestinal epithelia. When phosphorylated, plays a role in the secretion of mucin in the small intestine (By similarity).
Cellular Location	Cytoplasm
Tissue Location	Expressed predominantly in the intestinal epithelium. Expressed in luminal cells of colonic mucosa. Also expressed in the Merkel cells of keratinized oral mucosa; specifically at the tips of some rete ridges of the gingival mucosa, in the basal layer of the palatal mucosa and in the taste buds of lingual mucosa.

CK20 - Protocols

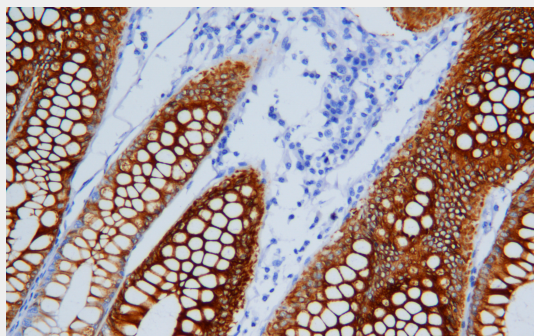
Provided below are standard protocols that you may find useful for product applications.

- [Western Blot](#)
- [Blocking Peptides](#)
- [Dot Blot](#)
- [Immunohistochemistry](#)
- [Immunofluorescence](#)
- [Immunoprecipitation](#)
- [Flow Cytometry](#)
- [Cell Culture](#)

CK20 - Images



Colon cancer



Immunohistochemical analysis of paraffin-embedded colorectal carcinoma; tissue using AD80024 performed on the Abcarta® FAIP-30 Fully automated IHC platform. Tissue was fixed with formaldehyde at room temperature, antigen retrieval was by heat mediation with a Citrate buffer (pH6.0). Samples were incubated with primary antibody (Ready-to-use) for 15 min at room temperature. AmpSee™ Detection Systems [Abcepta:AR005] was used as the secondary antibody.