

**CK19**  
**Rabbit Monoclonal antibody(Mab)**  
**Catalog # AD80023**

## Specification

---

### CK19 - Product info

|                   |                        |
|-------------------|------------------------|
| Application       | IHC-P, IHC             |
| Primary Accession | <a href="#">P08727</a> |
| Reactivity        | Human                  |
| Host              | Rabbit                 |
| Clonality         | Monoclonal             |
| Calculated MW     | 44106                  |

### CK19 - Additional info

|           |       |
|-----------|-------|
| Gene ID   | 3880  |
| Gene Name | KRT19 |

**Other Names**  
Keratin, type I cytoskeletal 19, Cytokeratin-19, CK-19, Keratin-19, K19, KRT19

### Dilution

IHC-P~~Ready-to-use  
IHC~~Ready-to-use

|             |  |
|-------------|--|
| Storage     | <b>This product is stored at 2-8 °C, please use it within the expiration date.</b>                     |
| Precautions | <b>CK19 Antibody is for research use only and not for use in diagnostic or therapeutic procedures.</b> |

### CK19 - Protein Information

**Name** KRT19

|                 |   |
|-----------------|---|
| Function        | <b>Involved in the organization of myofibers. Together with KRT8, helps to link the contractile apparatus to dystrophin at the costameres of striated muscle.</b>   |
| Tissue Location | <b>Expressed in a defined zone of basal keratinocytes in the deep outer root sheath of hair follicles Also observed in sweat gland and mammary gland ductal and secretory cells, bile ducts, gastrointestinal tract, bladder urothelium, oral epithelia, esophagus, ectocervical epithelium (at protein level). Expressed in epidermal basal cells, in nipple epidermis and a defined region of the hair follicle. Also seen in a subset of vascular wall cells</b> |

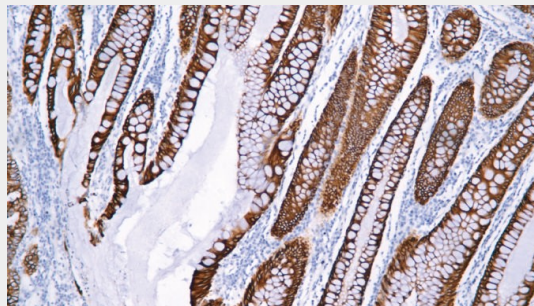
in both the veins and artery of human umbilical cord, and in umbilical cord vascular smooth muscle. Observed in muscle fibers accumulating in the costameres of myoplasm at the sarcolemma in structures that contain dystrophin and spectrin.

## CK19 - Protocols

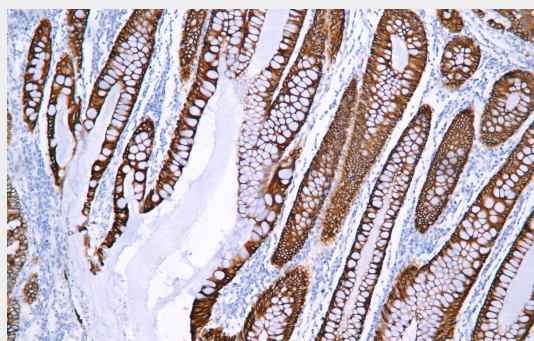
Provided below are standard protocols that you may find useful for product applications.

- [Western Blot](#)
- [Blocking Peptides](#)
- [Dot Blot](#)
- [Immunohistochemistry](#)
- [Immunofluorescence](#)
- [Immunoprecipitation](#)
- [Flow Cytometry](#)
- [Cell Culture](#)

## CK19 - Images



Colon cancer



Immunohistochemical analysis of paraffin-embedded colorectal carcinoma; tissue using AD80023 performed on the Abcarta® FAIP-30 Fully automated IHC platform. Tissue was fixed with formaldehyde at room temperature, antigen retrieval was by heat mediation with a Citrate buffer (pH6.0). Samples were incubated with primary antibody (Ready-to-use) for 15 min at room temperature. AmpSee™ Detection Systems [Abcepta:AR005] was used as the secondary antibody.