

**CK8**  
**Mouse Monoclonal antibody(Mab)**  
**Catalog # AD80020****Specification**

---

**CK8 - Product info**

|                   |                        |
|-------------------|------------------------|
| Application       | IHC-P, IHC             |
| Primary Accession | <a href="#">P05787</a> |
| Reactivity        | Human                  |
| Host              | Mouse                  |
| Clonality         | Monoclonal             |
| Calculated MW     | 53704                  |

**CK8 - Additional info**

|           |      |
|-----------|------|
| Gene ID   | 3856 |
| Gene Name | KRT8 |

**Other Names**

Keratin, type II cytoskeletal 8, Cytokeratin-8, CK-8, Keratin-8, K8, Type-II keratin Kb8, KRT8, CYK8

**Dilution**

IHC-P~~Ready-to-use

IHC~~Ready-to-use

**Storage**

Maintain refrigerated at 2-8°C

**Precautions**

**CK8 Antibody is for research use only and not for use in diagnostic or therapeutic procedures.**

**CK8 - Protein Information****Name** KRT8**Synonyms****Function****CYK8**

Together with KRT19, helps to link the contractile apparatus to dystrophin at the costameres of striated muscle.

Cytoplasm. Nucleus, nucleoplasm Nucleus matrix

**Cellular Location****Tissue Location**

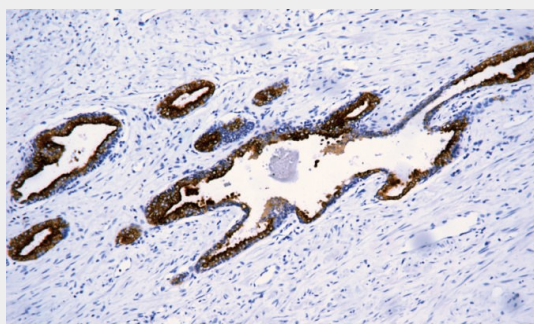
Observed in muscle fibers accumulating in the costameres of myoplasm at the sarcolemma membrane in structures that contain dystrophin and spectrin. Expressed in gingival mucosa and hard palate of the oral cavity.

## CK8 - Protocols

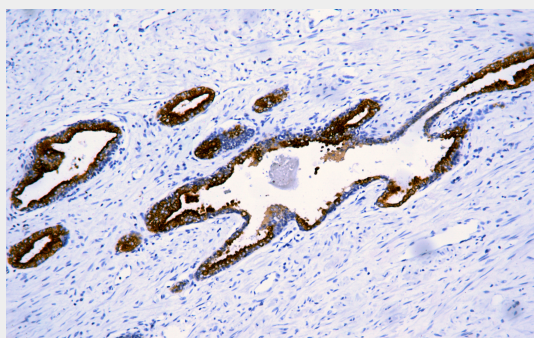
Provided below are standard protocols that you may find useful for product applications.

- [Western Blot](#)
- [Blocking Peptides](#)
- [Dot Blot](#)
- [Immunohistochemistry](#)
- [Immunofluorescence](#)
- [Immunoprecipitation](#)
- [Flow Cytometry](#)
- [Cell Culture](#)

## CK8 - Images



Prostate cancer



Immunohistochemical analysis of paraffin-embedded prostatic cancer tissue using AD80020 performed on the Abcarta® FAIP-30 Fully automated IHC platform. Tissue was fixed with formaldehyde at room temperature, antigen retrieval was by heat mediation with a EDTA buffer (pH9.0). Samples were incubated with primary antibody (Ready-to-use) for 15 min at room temperature. AmpSee™ Detection Systems □ Abcepta:AR005 □ was used as the secondary antibody.