

CK5
Mouse Monoclonal antibody(Mab)
Catalog # AD80018

Specification

CK5 - Product info

Application	IHC-P, IHC
Primary Accession	P13647
Reactivity	Human
Host	Mouse
Clonality	Monoclonal
Calculated MW	62378

CK5 - Additional info

Gene ID	3852
Gene Name	KRT5

Other Names

Keratin, type II cytoskeletal 5, 58 kDa cytokeratin, Cytokeratin-5, CK-5, Keratin-5, K5, Type-II keratin Kb5, KRT5

Dilution

IHC-P~~Ready-to-use
IHC~~Ready-to-use

Storage

Maintain refrigerated at 2-8°C

Precautions

CK5 Antibody is for research use only and not for use in diagnostic or therapeutic procedures.

CK5 - Protein Information

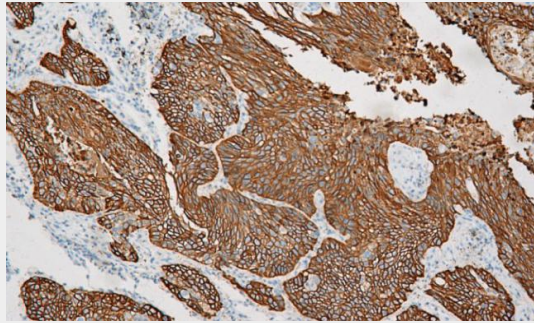
Name KRT5

CK5 - Protocols

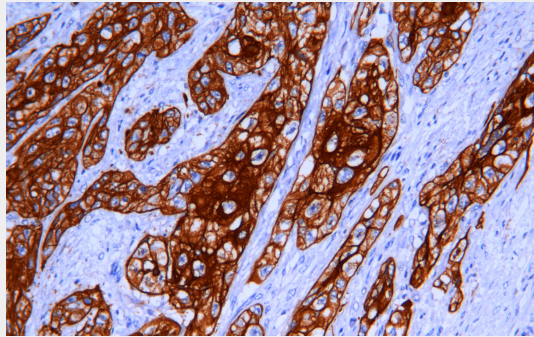
Provided below are standard protocols that you may find useful for product applications.

- [Western Blot](#)
- [Blocking Peptides](#)
- [Dot Blot](#)
- [Immunohistochemistry](#)
- [Immunofluorescence](#)
- [Immunoprecipitation](#)
- [Flow Cytometry](#)

- [Cell Culture](#)

CK5 - Images

Esophageal squamous cell carcinoma



Immunohistochemical analysis of paraffin-embedded esophageal squamous cell carcinomas tissue using AD80018 performed on the Abcarta® FAIP-30 Fully automated IHC platform. Tissue was fixed with formaldehyde at room temperature, antigen retrieval was by heat mediation with a EDTA buffer (pH9.0). Samples were incubated with primary antibody (Ready-to-use) for 15 min at room temperature. AmpSee™ Detection Systems [Abcepta:AR005] was used as the secondary antibody.