

CEA
Mouse Monoclonal antibody(Mab)
Catalog # AD80017

Specification

CEA - Product info

Application	IHC-P, IHC
Primary Accession	P06731
Reactivity	Human
Host	Mouse
Clonality	Monoclonal
Calculated MW	76796

CEA - Additional info

Gene ID	1048
Gene Name	CEACAM5

Other Names

Carcinoembryonic antigen-related cell adhesion molecule 5, Carcinoembryonic antigen, CEA, Meconium antigen 100, CD66e, CEACAM5, CEA

Dilution

IHC-P~~Ready-to-use
IHC~~Ready-to-use

Storage

This product is stored at 2-94 °C, please use it within the expiration date.

Precautions

CEA Antibody is for research use only and not for use in diagnostic or therapeutic procedures.

CEA - Protein Information

Name CEACAM5

Synonyms
Function

CEA

Cell surface glycoprotein that plays a role in cell adhesion, intracellular signaling and tumor progression (PubMed:[2803308](#), PubMed:[10910050](#), PubMed:[10864933](#)). Mediates homophilic and heterophilic cell adhesion with other carcinoembryonic antigen-related cell adhesion molecules, such as CEACAM6 (PubMed:[2803308](#)). Plays a role as an oncogene by promoting tumor progression; induces resistance to anoikis of colorectal carcinoma cells (PubMed:[10910050](#)).

Cellular Location

Cell membrane; Lipid- anchor, GPI-anchor.

Tissue Location

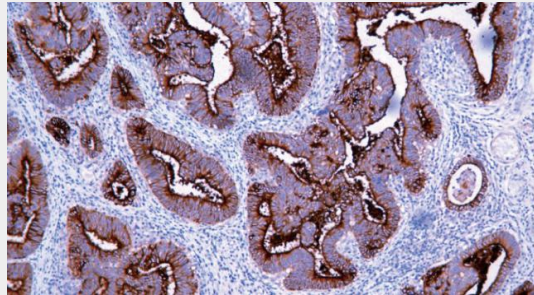
Apical cell membrane. Cell surface
Note=Localized to the apical glycoalyx surface
Expressed in columnar epithelial and goblet cells of the colon (at protein level) (PubMed:10436421). Found in adenocarcinomas of endoderally derived digestive system epithelium and fetal colon.

CEA - Protocols

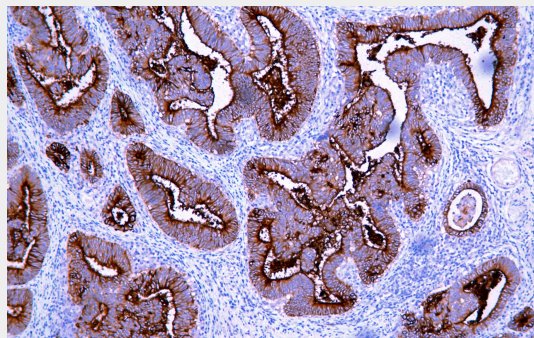
Provided below are standard protocols that you may find useful for product applications.

- [Western Blot](#)
- [Blocking Peptides](#)
- [Dot Blot](#)
- [Immunohistochemistry](#)
- [Immunofluorescence](#)
- [Immunoprecipitation](#)
- [Flow Cytometry](#)
- [Cell Culture](#)

CEA - Images



Colon cancer



Immunohistochemical analysis of paraffin-embedded colorectal carcinoma; tissue using AD80017 performed on the Abcarta® FAIP-30 Fully automated IHC platform. Tissue was fixed with formaldehyde at room temperature, antigen retrieval was by heat mediation with a Citrate buffer (pH6.0). Samples were incubated with primary antibody (Ready-to-use) for 15 min at room temperature. AmpSee™ Detection Systems [Abcepta:AR005] was used as the secondary antibody.