

**BNP Antibody**  
**Rabbit Polyclonal Antibody**  
**Catalog # ABV11483****Specification**

---

**BNP Antibody - Product Information**

Application	<b>WB</b>
Primary Accession	<a href="#">P16860</a>
Reactivity	<b>Human</b>
Host	<b>Rabbit</b>
Clonality	<b>Polyclonal</b>
Isotype	<b>Rabbit IgG</b>
Calculated MW	<b>14726</b>

**BNP Antibody - Additional Information****Gene ID 4879**

Positive Control	<b>Western Blot: human BNP</b>
Application & Usage	<b>Western blot: 1-4 µg</b>
<b>Other Names</b>	
NPPB, Natriuretic Peptide Precursor B, BNP, B-type Natriuretic Peptide	

**Target/Specificity**

BNP

**Antibody Form**

Liquid

**Appearance**

Colorless liquid

**Formulation**

100 µg (0.5 mg/ml) of antibody in PBS pH 7.2, 0.01 % BSA, 0.03 % ProClin®, and 50 % glycerol.

**Handling**

The antibody solution should be gently mixed before use.

**Reconstitution & Storage**

-20 °C

**Background Descriptions****Precautions**

BNP Antibody is for research use only and not for use in diagnostic or therapeutic procedures.

**BNP Antibody - Protein Information**

## Name NPPB

### Function

[Brain natriuretic peptide 32]: Cardiac hormone that plays a key role in mediating cardio-renal homeostasis (PubMed:<a href="http://www.uniprot.org/citations/1672777" target="\_blank">1672777</a>, PubMed:<a href="http://www.uniprot.org/citations/17372040" target="\_blank">17372040</a>, PubMed:<a href="http://www.uniprot.org/citations/1914098" target="\_blank">1914098</a>, PubMed:<a href="http://www.uniprot.org/citations/9458824" target="\_blank">9458824</a>). May also function as a paracrine antifibrotic factor in the heart (By similarity). Acts by specifically binding and stimulating NPR1 to produce cGMP, which in turn activates effector proteins that drive various biological responses (PubMed:<a href="http://www.uniprot.org/citations/1672777" target="\_blank">1672777</a>, PubMed:<a href="http://www.uniprot.org/citations/17349887" target="\_blank">17349887</a>, PubMed:<a href="http://www.uniprot.org/citations/17372040" target="\_blank">17372040</a>, PubMed:<a href="http://www.uniprot.org/citations/21098034" target="\_blank">21098034</a>, PubMed:<a href="http://www.uniprot.org/citations/25339504" target="\_blank">25339504</a>, PubMed:<a href="http://www.uniprot.org/citations/9458824" target="\_blank">9458824</a>). Involved in regulating the extracellular fluid volume and maintaining the fluid- electrolyte balance through natriuresis, diuresis, vasorelaxation, and inhibition of renin and aldosterone secretion (PubMed:<a href="http://www.uniprot.org/citations/1914098" target="\_blank">1914098</a>, PubMed:<a href="http://www.uniprot.org/citations/9458824" target="\_blank">9458824</a>). Binds the clearance receptor NPR3 (PubMed:<a href="http://www.uniprot.org/citations/16870210" target="\_blank">16870210</a>).

### Cellular Location

[NT-proBNP]: Secreted Note=Detected in blood. [Brain natriuretic peptide 32]: Secreted. Note=Detected in blood.

### Tissue Location

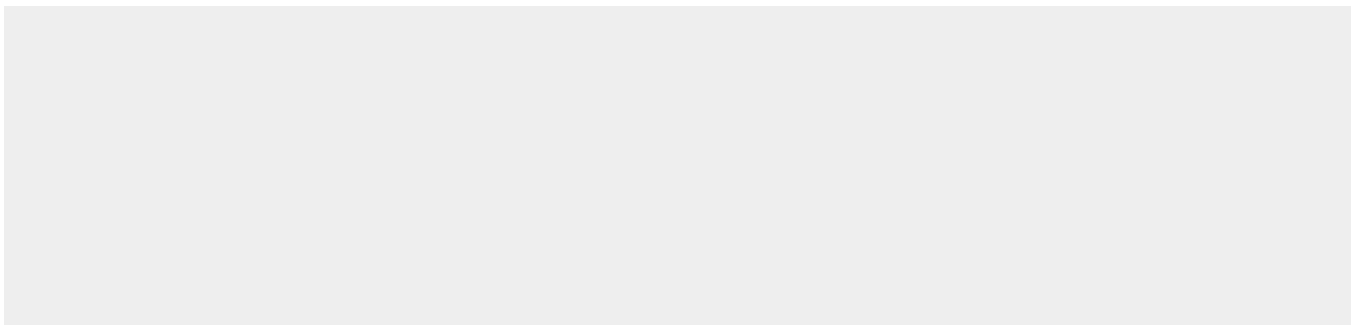
[Brain natriuretic peptide 32]: Detected in the cardiac atria (at protein level) (PubMed:2136732, PubMed:2138890) Detected in the kidney distal tubular cells (at protein level) (PubMed:9794555).

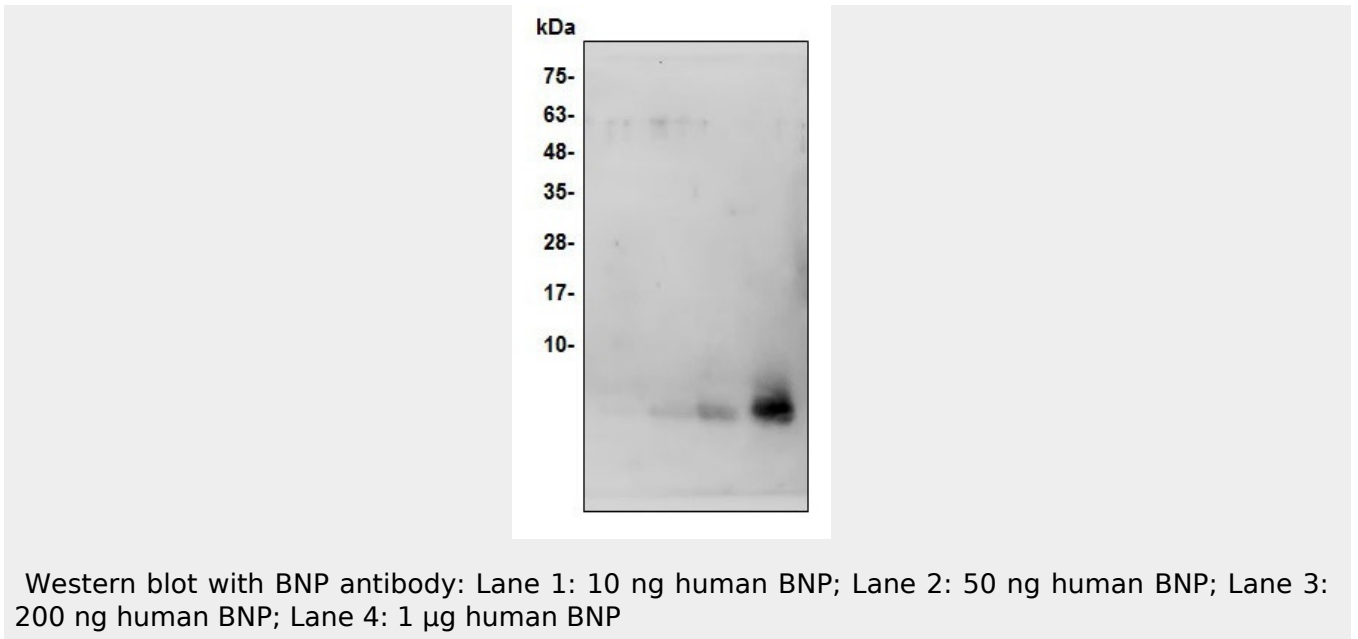
## BNP Antibody - Protocols

Provided below are standard protocols that you may find useful for product applications.

- [Western Blot](#)
- [Blocking Peptides](#)
- [Dot Blot](#)
- [Immunohistochemistry](#)
- [Immunofluorescence](#)
- [Immunoprecipitation](#)
- [Flow Cytometry](#)
- [Cell Culture](#)

## BNP Antibody - Images





### **BNP Antibody - Background**

Natriuretic Peptide Precursor B acts as a cardiac hormone with a variety of biological actions including natriuresis, diuresis, vasorelaxation, and inhibition of renin and aldosterone secretion. It is thought to play a key role in cardiovascular homeostasis. It helps to restore the body's salt and H<sub>2</sub>O balance and improves heart function