

CBX2 polyclonal antibody
Rabbit Polyclonal Antibody
Catalog # ABV11375**Specification**

CBX2 polyclonal antibody - Product Information

Application	E
Primary Accession	Q14781
Host	Rabbit
Clonality	Polyclonal
Isotype	Rabbit IgG
Calculated MW	56081

CBX2 polyclonal antibody - Additional Information**Gene ID** 84733

Positive Control	ELISA: Peptides.
Application & Usage	ELISA: 1:300.
Other Names	
CDCA6, M33, SRXY5	

Target/Specificity
CBX2**Antibody Form**
Liquid**Appearance**
Colorless liquid**Formulation**
In PBS with 0.05% (W/V) sodium azide.**Handling**
The antibody solution should be gently mixed before use.**Reconstitution & Storage**
-20 °C**Background Descriptions****Precautions**
CBX2 polyclonal antibody is for research use only and not for use in diagnostic or therapeutic procedures.**CBX2 polyclonal antibody - Protein Information**

Name CBX2

Function

Component of a Polycomb group (PcG) multiprotein PRC1-like complex, a complex class required to maintain the transcriptionally repressive state of many genes, including Hox genes, throughout development (PubMed:21282530). PcG PRC1 complex acts via chromatin remodeling and modification of histones; it mediates monoubiquitination of histone H2A 'Lys-119', rendering chromatin heritably changed in its expressibility (PubMed:21282530). Binds to histone H3 trimethylated at 'Lys-9' (H3K9me3) or at 'Lys-27' (H3K27me3) (By similarity). Plays a role in the lineage differentiation of the germ layers in embryonic development (By similarity). Involved in sexual development, acting as activator of NR5A1 expression (PubMed:19361780).

Cellular Location

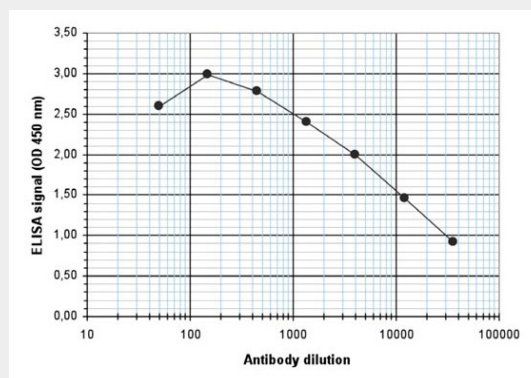
Nucleus. Chromosome Note=Localized in distinct foci on chromatin and in chromocenters
Localizes to the inactive X chromosome. Seems to be recruited to H3K27me3, H3K9ac and H3K3me2 sites on chromatin

CBX2 polyclonal antibody - Protocols

Provided below are standard protocols that you may find useful for product applications.

- [Western Blot](#)
- [Blocking Peptides](#)
- [Dot Blot](#)
- [Immunohistochemistry](#)
- [Immunofluorescence](#)
- [Immunoprecipitation](#)
- [Flow Cytometry](#)
- [Cell Culture](#)

CBX2 polyclonal antibody - Images



To determine the titer, an ELISA was performed using a serial dilution of the antibody. The wells were coated with the peptide used for immunization of the rabbit. By plotting the absorbance against the antibody dilution the titer of the antibody was estimated to be 1:10,900.

CBX2 polyclonal antibody - Background

CBX2 is a component of a Polycomb group (PcG) multiprotein PRC1-like complex, a complex class

required to maintain the transcriptionally repressive state of many genes, including Hox genes, throughout development. The PcG PRC1 complex acts via chromatin remodelling and modification of histones; it mediates monoubiquitination of lysine 119 on histone H2A, rendering chromatin heritably changed in its expressibility. CBX2 also is involved in sexual development, acting as an activator of NR5A1 expression.