

**LDHA Antibody (CT)**  
**Rabbit Polyclonal Antibody**  
**Catalog # ABV11285****Specification**

---

**LDHA Antibody (CT) - Product Information**

Application	IHC, WB, IF
Primary Accession	<a href="#">P00338</a>
Reactivity	Human, Monkey
Host	Rabbit
Clonality	Polyclonal
Isotype	Rabbit IgG
Calculated MW	36689

**LDHA Antibody (CT) - Additional Information****Gene ID** 3939

Positive Control

**Western blot: MDA-MB231 cell lysate, IHC: human hepatocarcinoma, IF: A375 cells**  
**Western blot: ~1:1000, IHC: ~1:10-1:50, IF: ~1:10-1:50.**

Application &amp; Usage

**Other Names**

LDHA; L-lactate dehydrogenase A chain; Cell proliferation-inducing gene 19 protein; LDH muscle subunit; Renal carcinoma antigen NY-REN-59.

**Target/Specificity**

LDHA

**Antibody Form**

Liquid

**Appearance**

Colorless liquid

**Formulation**

100 µl of antibody in PBS with 0.09% (W/V) sodium azide

**Handling**

The antibody solution should be gently mixed before use.

**Reconstitution & Storage**

-20 °C

**Background Descriptions****Precautions**

LDHA Antibody (CT) is for research use only and not for use in diagnostic or therapeutic procedures.

## LDHA Antibody (CT) - Protein Information

**Name** LDHA ([HGNC:6535](#))

### Function

Interconverts simultaneously and stereospecifically pyruvate and lactate with concomitant interconversion of NADH and NAD(+).

### Cellular Location

Cytoplasm.

### Tissue Location

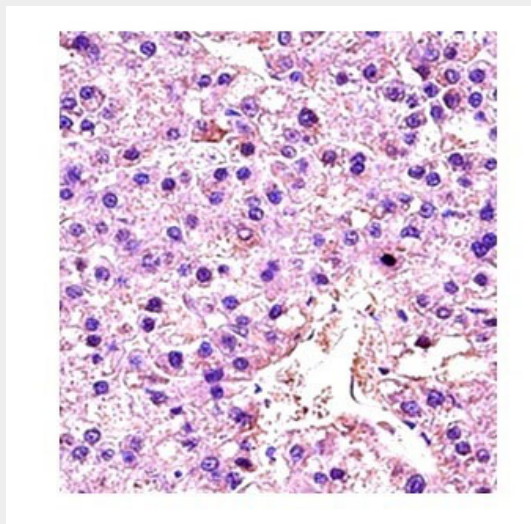
Predominantly expressed in anaerobic tissues such as skeletal muscle and liver.

## LDHA Antibody (CT) - Protocols

Provided below are standard protocols that you may find useful for product applications.

- [Western Blot](#)
- [Blocking Peptides](#)
- [Dot Blot](#)
- [Immunohistochemistry](#)
- [Immunofluorescence](#)
- [Immunoprecipitation](#)
- [Flow Cytometry](#)
- [Cell Culture](#)

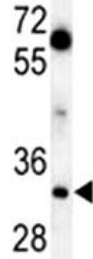
## LDHA Antibody (CT) - Images



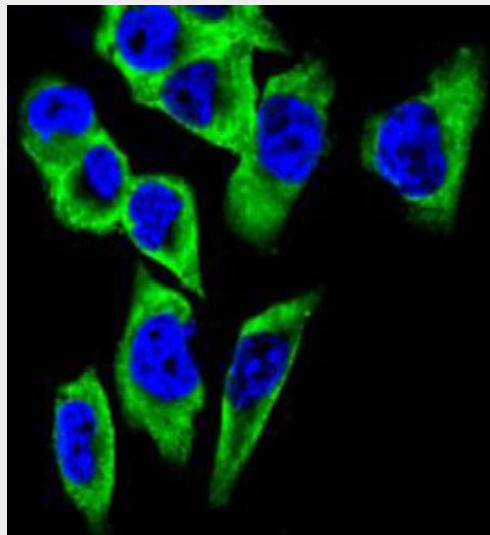
Formalin-fixed and paraffin-embedded human hepatocarcinoma reacted with LDHA antibody (CT), which was peroxidase-conjugated to the secondary antibody, followed by DAB staining.

MDA-MB231

72  
55  
36  
28



LDHA Antibody (C-term) western blot analysis in MDA-MB231 cell line lysates (35 µg/lane). This demonstrates the LDHA antibody detected the LDHA protein (arrow).



Confocal immunofluorescent analysis of LDHA Antibody (C-term) with A375 cell followed by Alexa Fluor 488-conjugated goat anti-rabbit IgG (green). DAPI was used to stain the cell nuclear (blue).

### **LDHA Antibody (CT) - Background**

L-Lactate dehydrogenase A chain (LDHA) is a member of the LDH/MDH superfamily and LDH family. It catalyzes the conversion of L-lactate and NAD to pyruvate and NADH in the final step of anaerobic glycolysis. LDHA is localized primarily in muscle tissue and is part of the lactate dehydrogenase family. Mutations in LDHA have been linked to exertional myoglobinuria. LDH1 is decreased in essential thrombocythemia. LDHA is induced through a non-genomic pathway of estrogen action. Reduction in LDH-A activity results in stimulation of mitochondrial respiration and decrease of mitochondrial membrane potential. Mutations in LDHA have been associated with in LDHA are the cause of glycogen storage disease type 11 (GSD11) which is a metabolic disorder that results in exertional myoglobinuria, pain, cramps and easy fatigue.