

**Synapsin Antibody**  
**Rabbit Polyclonal Antibody**  
**Catalog # ABV11099****Specification**

---

**Synapsin Antibody - Product Information**

Application	WB
Primary Accession	<a href="#">P17600</a>
Reactivity	Human, Mouse, Rat
Host	Rabbit
Clonality	Polyclonal
Isotype	Rabbit IgG
Calculated MW	74111

**Synapsin Antibody - Additional Information****Gene ID** 6853**Application & Usage****Western blot analysis (0.5-4 µg/ml). It detects the 60-80 kDa synapsins. Jurkat cell lysates and rat kidney tissue lysate can be used as positive controls. Blocking peptide is available separately.****Other Names**

SYN, syn

**Target/Specificity**

Synapsin

**Antibody Form**

Liquid

**Appearance**

Colorless liquid

**Formulation**

100 µg (0.5 mg/ml) affinity purified rabbit anti-Synapsin polyclonal antibody in phosphate buffered saline (PBS), pH 7.2, containing 30% glycerol, 0.5% BSA, and 0.01% thimerosal.

**Handling**

The antibody solution should be gently mixed before use.

**Reconstitution & Storage**

-20 °C

**Background Descriptions****Precautions**

Synapsin Antibody is for research use only and not for use in diagnostic or therapeutic procedures.

## Synapsin Antibody - Protein Information

**Name** SYN1

### Function

Neuronal phosphoprotein that coats synaptic vesicles, and binds to the cytoskeleton. Acts as a regulator of synaptic vesicles trafficking, involved in the control of neurotransmitter release at the pre-synaptic terminal (PubMed: [21441247](http://www.uniprot.org/citations/21441247), PubMed: [23406870](http://www.uniprot.org/citations/23406870)). Also involved in the regulation of axon outgrowth and synaptogenesis (By similarity). The complex formed with NOS1 and CAPON proteins is necessary for specific nitric-oxid functions at a presynaptic level (By similarity).

### Cellular Location

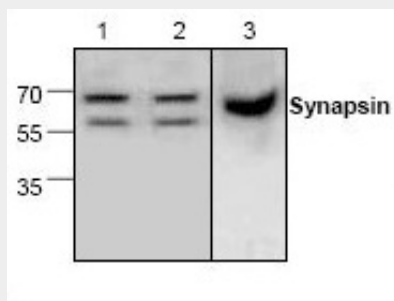
Synapse {ECO:0000250|UniProtKB:O88935}. Golgi apparatus {ECO:0000250|UniProtKB:O88935}. Presynapse. Cytoplasmic vesicle, secretory vesicle, synaptic vesicle {ECO:0000250|UniProtKB:P09951}. Note=Dissociates from synaptic vesicles and redistributes into the axon during action potential firing, in a step that precedes fusion of vesicles with the plasma membrane. Reclusters to presynapses after the cessation of synaptic activity. {ECO:0000250|UniProtKB:P09951}

## Synapsin Antibody - Protocols

Provided below are standard protocols that you may find useful for product applications.

- [Western Blot](#)
- [Blocking Peptides](#)
- [Dot Blot](#)
- [Immunohistochemistry](#)
- [Immunofluorescence](#)
- [Immunoprecipitation](#)
- [Flow Cytometry](#)
- [Cell Culture](#)

## Synapsin Antibody - Images



Western blot analysis of Synapsin in Jurkat cell lysates (Lane 1, 2) and rat kidney tissue lysate (lane 3).

## Synapsin Antibody - Background

Synapsins are abundant brain proteins essential for regulating neurotransmitter release. All synapsins contain a short N-terminal domain that is highly conserved and phosphorylated by PKA or

CaM kinase I. Phosphorylation of synapsin N-terminal domain at Ser9 inhibits its binding to phospholipids and diassociates synapsins from synaptic vesicles.