

Sox-1 Antibody
Rabbit Polyclonal Antibody
Catalog # ABV10636

Specification

Sox-1 Antibody - Product Information

Application	WB
Primary Accession	P53783
Reactivity	Human, Mouse, Rat
Host	Rabbit
Clonality	Polyclonal
Isotype	Rabbit IgG
Calculated MW	39053

Sox-1 Antibody - Additional Information

Gene ID 20664

Application & Usage

Western blotting (0.5-4 µg/ml). However, the optimal conditions should be determined individually. The antibody recognizes ~ 43 kDa Sox-1 in samples of human and mouse origins. Reactivity to other species has not been tested.

Other Names

SOX1, SOX 1, sex determining region Y box 1, SRY, SRY-box containing gene 1

Target/Specificity

Sox1

Antibody Form

Liquid

Appearance

Colorless liquid

Formulation

100 µg (0.5 mg/ml) affinity purified rabbit anti-Sox-1 polyclonal antibody in phosphate buffered saline (PBS), pH 7.2, containing 30% glycerol, 0.5% BSA, 0.01% thimerosal.

Handling

The antibody solution should be gently mixed before use.

Reconstitution & Storage

-20 °C

Background Descriptions

Precautions

Sox-1 Antibody is for research use only and not for use in diagnostic or therapeutic procedures.

Sox-1 Antibody - Protein Information

Name Sox1

Synonyms Sox-1

Function

Transcriptional activator. May function as a switch in neuronal development. Keeps neural cells undifferentiated by counteracting the activity of proneural proteins and suppresses neuronal differentiation (By similarity).

Cellular Location

Nucleus.

Tissue Location

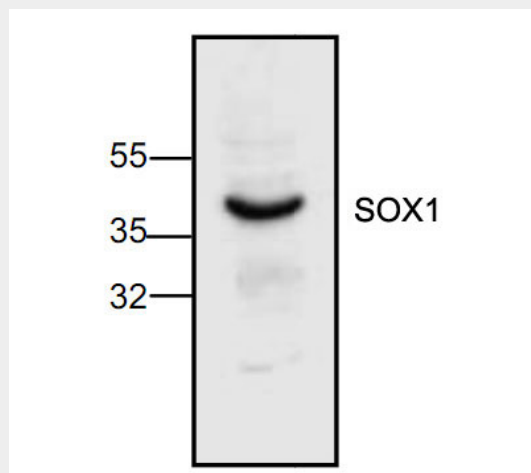
Mainly in the developing central nervous system. Expressed in developing urogenital ridge

Sox-1 Antibody - Protocols

Provided below are standard protocols that you may find useful for product applications.

- [Western Blot](#)
- [Blocking Peptides](#)
- [Dot Blot](#)
- [Immunohistochemistry](#)
- [Immunofluorescence](#)
- [Immunoprecipitation](#)
- [Flow Cytometry](#)
- [Cell Culture](#)

Sox-1 Antibody - Images



Western blot analysis of Sox-1 expression in Jurkat cell lysate.

Sox-1 Antibody - Background

Sox proteins are related to mammalian sex determining gene that encodes DNA-binding protein. About 30 SOX family proteins have been identified. Sox-1 is a transcription factor that is found in the embryonic nervous system. Sox-1 maintains neural cells in an undifferentiated state and has been used as a marker for neural stem cells.