

**Alpha-Amylase Antibody**  
**Rabbit Polyclonal Antibody**  
**Catalog # ABV10008**

**Specification**

---

**Alpha-Amylase Antibody - Product Information**

Application	WB
Primary Accession	<a href="#">P04745</a>
Reactivity	Human, Mouse, Rat
Host	Rabbit
Clonality	Polyclonal
Isotype	Rabbit IgG

**Alpha-Amylase Antibody - Additional Information**

Positive Control	Jurkat (Induced and Uninduced), Rat Kidney, 3T3 cell lysates
Application & Usage	Western blot analysis (1-4 µg/ml). However, the optimal conditions should be determined individually.

**Other Names**

Alpha-amylase 1, 1, 4-alpha-D-glucan glucohydrolase 1, Salivary alpha-amylase

**Target/Specificity**

Amylase

**Antibody Form**

Liquid

**Appearance**

Colorless liquid

**Formulation**

100 µg (0.5 mg/ml) affinity purified rabbit anti- α-Amylase polyclonal antibody in phosphate buffered saline (PBS), pH 7.2, containing 30% glycerol, 0.5% BSA, 5 mM EDTA and 0.01% thimerosal.

**Handling**

The antibody solution should be gently mixed before use.

**Reconstitution & Storage**

-20 °C

**Background Descriptions**

**Precautions**

Alpha-Amylase Antibody is for research use only and not for use in diagnostic or therapeutic procedures.

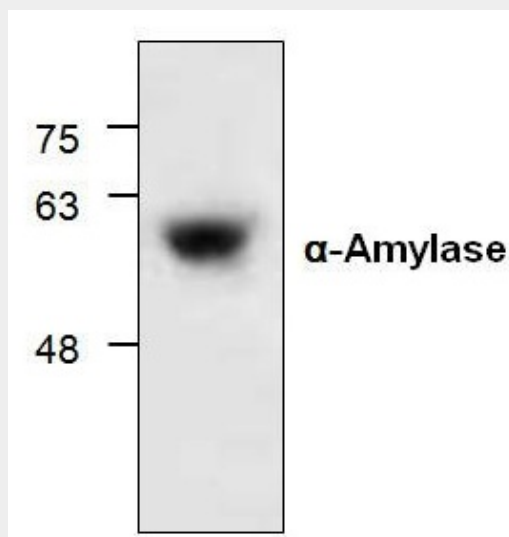
## Alpha-Amylase Antibody - Protein Information

### Alpha-Amylase Antibody - Protocols

Provided below are standard protocols that you may find useful for product applications.

- [Western Blot](#)
- [Blocking Peptides](#)
- [Dot Blot](#)
- [Immunohistochemistry](#)
- [Immunofluorescence](#)
- [Immunoprecipitation](#)
- [Flow Cytometry](#)
- [Cell Culture](#)

### Alpha-Amylase Antibody - Images



Western blot analysis of  $\alpha$ -Amylase with 3T3 cell lysate.

### Alpha-Amylase Antibody - Background

$\alpha$ -Amylase is an enzyme that is normally produced in the saliva glands and pancreas in humans and in other mammals.  $\alpha$ -Amylase catalyzes the cleavage of 1, 4- $\alpha$ -D-glucosidic bonds of large sugar molecules into oligosaccharides and polysaccharides.