

Anti-Phospho-PLCB3 (S537) Rabbit Monoclonal Antibody Catalog # ABO16786

Specification

Anti-Phospho-PLCB3 (S537) Rabbit Monoclonal Antibody - Product Information

Application	WB
Primary Accession	Q01970
Host	Rabbit
Isotype	Rabbit IgG
Reactivity	Human
Clonality	Monoclonal
Format	Liquid

Description

Anti-Phospho-PLCB3 (S537) Rabbit Monoclonal Antibody . Tested in WB applications. This antibody reacts with Human.

Anti-Phospho-PLCB3 (S537) Rabbit Monoclonal Antibody - Additional Information

Gene ID 5331

Other Names

1-phosphatidylinositol 4, 5-bisphosphate phosphodiesterase beta-3, 3.1.4.11, Phosphoinositide phospholipase C-beta-3, Phospholipase C-beta-3, PLC-beta-3, PLCB3
{ECO:0000312|EMBL:AAA77683.1}

Application Details

WB 1:500-1:2000

Contents

Rabbit IgG in phosphate buffered saline, pH 7.4, 150mM NaCl, 0.02% sodium azide and 50% glycerol, 0.4-0.5mg/ml BSA.

Immunogen

A synthesized peptide derived from human Phospho-PLCB3 (S537)

Purification

Affinity-chromatography

Storage

Store at -20°C for one year. For short term storage and frequent use, store at 4°C for up to one month. Avoid repeated freeze-thaw cycles.

Anti-Phospho-PLCB3 (S537) Rabbit Monoclonal Antibody - Protein Information

Name PLCB3 {ECO:0000312|EMBL:AAA77683.1}

Function

The production of the second messenger molecules diacylglycerol (DAG) and inositol 1,4,5-trisphosphate (IP3) is mediated by activated phosphatidylinositol-specific phospholipase C enzymes (PubMed:29122926, PubMed:9188725). In neutrophils, participates in a phospholipase C-activating N-formyl peptide-activated GPCR (G protein- coupled receptor) signaling pathway by promoting RASGRP4 activation by DAG, to promote neutrophil functional responses (By similarity).

Cellular Location

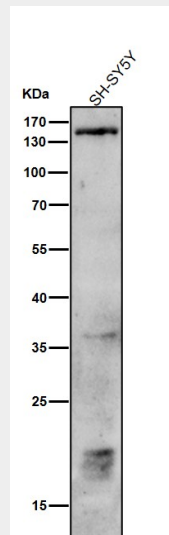
Cytoplasm. Membrane {ECO:0000250|UniProtKB:Q99JE6}. Nucleus {ECO:0000250|UniProtKB:P51432} Note=And particulate fractions. {ECO:0000250|UniProtKB:Q99JE6}

Anti-Phospho-PLCB3 (S537) Rabbit Monoclonal Antibody - Protocols

Provided below are standard protocols that you may find useful for product applications.

- [Western Blot](#)
- [Blocking Peptides](#)
- [Dot Blot](#)
- [Immunohistochemistry](#)
- [Immunofluorescence](#)
- [Immunoprecipitation](#)
- [Flow Cytometry](#)
- [Cell Culture](#)

Anti-Phospho-PLCB3 (S537) Rabbit Monoclonal Antibody - Images



All lanes use the Antibody at 1:1K dilution for 1 hour at room temperature.