

Anti-Pleiotrophin Rabbit Monoclonal Antibody Catalog # ABO16783

Specification

Anti-Pleiotrophin Rabbit Monoclonal Antibody - Product Information

Application	WB
Primary Accession	P21246
Host	Rabbit
Isotype	Rabbit IgG
Reactivity	Rat, Human, Mouse
Clonality	Monoclonal
Format	Liquid

Description

Anti-Pleiotrophin Rabbit Monoclonal Antibody . Tested in WB applications. This antibody reacts with Human, Mouse, Rat.

Anti-Pleiotrophin Rabbit Monoclonal Antibody - Additional Information

Gene ID 5764

Other Names

Pleiotrophin, PTN, Heparin-binding brain mitogen, HBBM, Heparin-binding growth factor 8, Heparin-binding neurite outgrowth-promoting factor, HBNF, Heparin-binding neurite outgrowth-promoting factor 1, HBNF-1, Osteoblast-specific factor 1, OSF-1, PTN ([HGNC:9630](http://www.genenames.org/cgi-bin/gene_symbol_report?hgnc_id=9630)), HBNF1, NEGF1

Application Details

WB 1:500-1:2000

Contents

Rabbit IgG in phosphate buffered saline, pH 7.4, 150mM NaCl, 0.02% sodium azide and 50% glycerol, 0.4-0.5mg/ml BSA.

Immunogen

A synthesized peptide derived from human Pleiotrophin

Purification

Affinity-chromatography

Storage

Store at -20°C for one year. For short term storage and frequent use, store at 4°C for up to one month. Avoid repeated freeze-thaw cycles.

Anti-Pleiotrophin Rabbit Monoclonal Antibody - Protein Information

Name PTN ([HGNC:9630](#))

Synonyms HBNF1, NEGFI

Function

Secreted growth factor that mediates its signal through cell- surface proteoglycan and non-proteoglycan receptors (PubMed:11278720, PubMed:16814777, PubMed:19141530). Binds cell-surface proteoglycan receptor via their chondroitin sulfate (CS) groups (PubMed:26896299, PubMed:27445335). Thereby regulates many processes like cell proliferation, cell survival, cell growth, cell differentiation and cell migration in several tissues namely neuron and bone (PubMed:11278720, PubMed:1733956, PubMed:1768439, PubMed:19141530, PubMed:19442624, PubMed:27445335, PubMed:30667096). Also plays a role in synaptic plasticity and learning-related behavior by inhibiting long-term synaptic potentiation (By similarity). Binds PTPRZ1, leading to neutralization of the negative charges of the CS chains of PTPRZ1, inducing PTPRZ1 clustering, thereby causing the dimerization and inactivation of its phosphatase activity leading to increased tyrosine phosphorylation of each of the PTPRZ1 substrates like ALK, CTNNB1 or AFAP1L2 in order to activate the PI3K-AKT pathway (PubMed:10706604, PubMed:16814777, PubMed:17681947, PubMed:27445335, PubMed:30667096). Through PTPRZ1 binding controls oligodendrocyte precursor cell differentiation by enhancing the phosphorylation of AFAP1L2 in order to activate the PI3K-AKT pathway (PubMed:27445335, PubMed:30667096). Forms a complex with PTPRZ1 and integrin alpha-V/beta-3 (ITGAV:ITGB3) that stimulates endothelial cell migration through SRC dephosphorylation and activation that consequently leads to ITGB3 'Tyr-773' phosphorylation (PubMed:19141530). In adult hippocampus promotes dendritic arborization, spine development, and functional integration and connectivity of newborn granule neurons through ALK by activating AKT signaling pathway (By similarity). Binds GPC2 and chondroitin sulfate proteoglycans (CSPGs) at the neuron surface, leading to abrogation of binding between PTPRS and CSPGs and neurite outgrowth promotion (By similarity). Binds SDC3 and mediates bone formation by recruiting and attaching osteoblasts/osteoblast precursors to the sites for new bone deposition (By similarity). Binds ALK and promotes cell survival and cell proliferation through MAPK pathway activation (PubMed:11278720). Inhibits proliferation and enhances differentiation of neural stem cells by inhibiting FGF2-induced fibroblast growth factor receptor signaling pathway (By similarity). Mediates regulatory mechanisms in normal hemostasis and in hematopoietic regeneration and in maintaining the balance of myeloid and lymphoid regeneration (By similarity). In addition may play a role in the female reproductive system, auditory response and the progesterone-induced decidualization pathway (By similarity).

Cellular Location

Secreted

Tissue Location

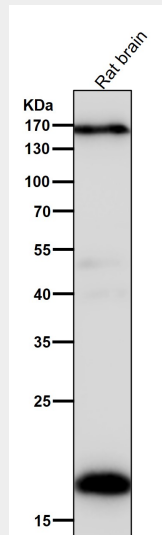
Osteoblast and brain..

Anti-Pleiotrophin Rabbit Monoclonal Antibody - Protocols

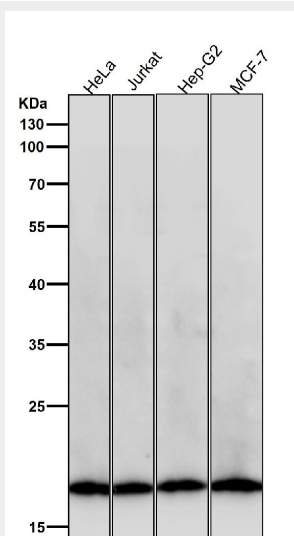
Provided below are standard protocols that you may find useful for product applications.

- [Western Blot](#)
- [Blocking Peptides](#)
- [Dot Blot](#)
- [Immunohistochemistry](#)
- [Immunofluorescence](#)
- [Immunoprecipitation](#)
- [Flow Cytometry](#)
- [Cell Culture](#)

Anti-Pleiotrophin Rabbit Monoclonal Antibody - Images



All lanes use the Antibody at 1:5K dilution for 1 hour at room temperature.



All lanes use the Antibody at 1:5K dilution for 1 hour at room temperature.