

## Anti-Phospho-MAP2 (S136) Rabbit Monoclonal Antibody Catalog # ABO16766

### Specification

---

#### Anti-Phospho-MAP2 (S136) Rabbit Monoclonal Antibody - Product Information

Application	WB, IHC
Primary Accession	<a href="#">P11137</a>
Host	Rabbit
Isotype	Rabbit IgG
Reactivity	Rat, Human, Mouse
Clonality	Monoclonal
Format	Liquid

#### Description

Anti-Phospho-MAP2 (S136) Rabbit Monoclonal Antibody . Tested in WB, IHC, ICC/IF applications. This antibody reacts with Human, Mouse, Rat.

#### Anti-Phospho-MAP2 (S136) Rabbit Monoclonal Antibody - Additional Information

Gene ID 4133

#### Other Names

Microtubule-associated protein 2, MAP-2, MAP2

#### Application Details

WB 1:500-1:2000<br>IHC 1:50-1:200<br>ICC/IF 1:50-1:200

#### Contents

Rabbit IgG in phosphate buffered saline, pH 7.4, 150mM NaCl, 0.02% sodium azide and 50% glycerol, 0.4-0.5mg/ml BSA.

#### Immunogen

A synthesized peptide derived from human Phospho-MAP2 (S136)

#### Purification

Affinity-chromatography

Storage

Store at -20°C for one year. For short term storage and frequent use, store at 4°C for up to one month. Avoid repeated freeze-thaw cycles.

#### Anti-Phospho-MAP2 (S136) Rabbit Monoclonal Antibody - Protein Information

Name MAP2

#### Function

The exact function of MAP2 is unknown but MAPs may stabilize the microtubules against depolymerization. They also seem to have a stiffening effect on microtubules.

### Cellular Location

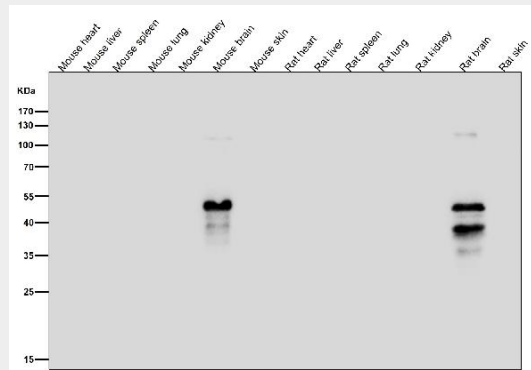
Cytoplasm, cytoskeleton. Cell projection, dendrite {ECO:0000250|UniProtKB:P20357}

### Anti-Phospho-MAP2 (S136) Rabbit Monoclonal Antibody - Protocols

Provided below are standard protocols that you may find useful for product applications.

- [Western Blot](#)
- [Blocking Peptides](#)
- [Dot Blot](#)
- [Immunohistochemistry](#)
- [Immunofluorescence](#)
- [Immunoprecipitation](#)
- [Flow Cytometry](#)
- [Cell Culture](#)

### Anti-Phospho-MAP2 (S136) Rabbit Monoclonal Antibody - Images



All lanes use the Antibody at 1:1W dilution for 1 hour at room temperature.