

Anti-ACADVL/VLCAD Rabbit Monoclonal Antibody
Catalog # ABO16760**Specification****Anti-ACADVL/VLCAD Rabbit Monoclonal Antibody - Product Information**

Application	WB, IHC, IP
Primary Accession	P49748
Host	Rabbit
Isotype	Rabbit IgG
Reactivity	Human
Clonality	Monoclonal
Format	Liquid

Description

Anti-ACADVL/VLCAD Rabbit Monoclonal Antibody . Tested in WB, IHC, IP applications. This antibody reacts with Human.

Anti-ACADVL/VLCAD Rabbit Monoclonal Antibody - Additional Information

Gene ID 37

Other Names

Very long-chain specific acyl-CoA dehydrogenase, mitochondrial, VLCAD, 1.3.8.9, ACADVL ([HGNC:92](http://www.genenames.org/cgi-bin/gene_symbol_report?hgnc_id=92))

Application Details

WB 1:500-1:2000
IHC 1:50-1:200
IP 1:50

Contents

Rabbit IgG in phosphate buffered saline, pH 7.4, 150mM NaCl, 0.02% sodium azide and 50% glycerol, 0.4-0.5mg/ml BSA.

Immunogen

A synthesized peptide derived from human ACADVL/VLCAD

Purification

Affinity-chromatography

Storage

Store at -20°C for one year. For short term storage and frequent use, store at 4°C for up to one month. Avoid repeated freeze-thaw cycles.

Anti-ACADVL/VLCAD Rabbit Monoclonal Antibody - Protein Information

Name ACADVL ([HGNC:92](#))

Function

Very long-chain specific acyl-CoA dehydrogenase is one of the acyl-CoA dehydrogenases that catalyze the first step of mitochondrial fatty acid beta-oxidation, an aerobic process breaking down fatty acids into acetyl-CoA and allowing the production of energy from fats (PubMed:18227065, PubMed:7668252, PubMed:9461620, PubMed:9599005, PubMed:9839948). The first step of fatty acid beta-oxidation consists in the removal of one hydrogen from C-2 and C-3 of the straight-chain fatty acyl-CoA thioester, resulting in the formation of trans-2-enoyl-CoA (PubMed:18227065, PubMed:7668252, PubMed:9461620, PubMed:9839948). Among the different mitochondrial acyl-CoA dehydrogenases, very long-chain specific acyl-CoA dehydrogenase acts specifically on acyl-CoAs with saturated 12 to 24 carbons long primary chains (PubMed:21237683, PubMed:9839948).

Cellular Location

Mitochondrion inner membrane; Peripheral membrane protein

Tissue Location

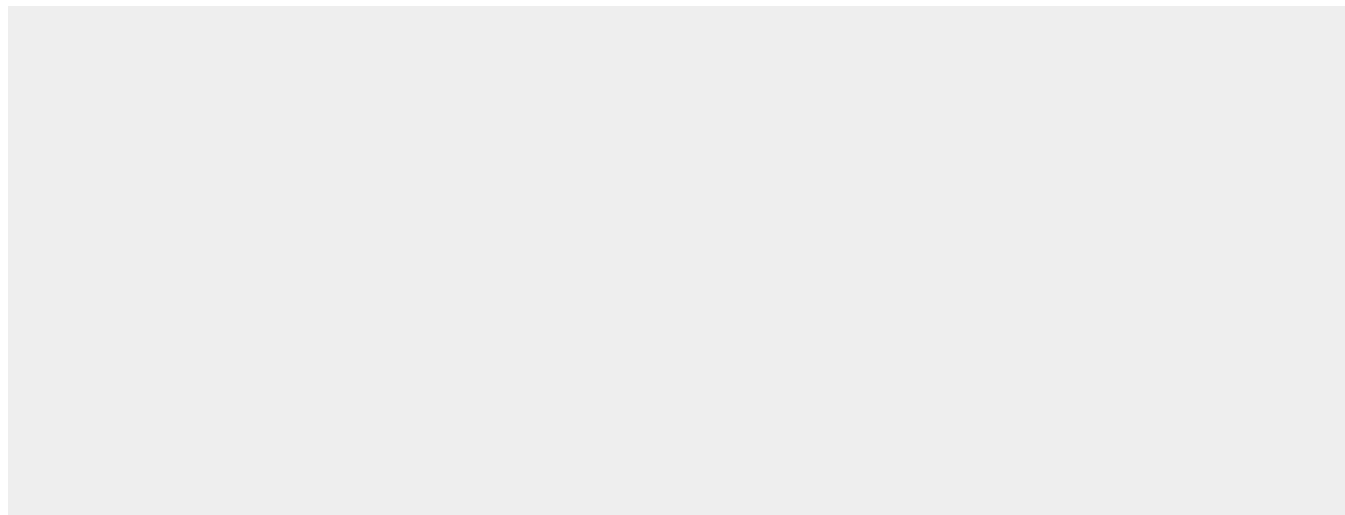
Predominantly expressed in heart and skeletal muscle (at protein level). Also detected in kidney and liver (at protein level).

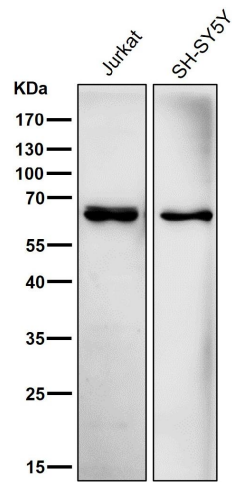
Anti-ACADVL/VLCAD Rabbit Monoclonal Antibody - Protocols

Provided below are standard protocols that you may find useful for product applications.

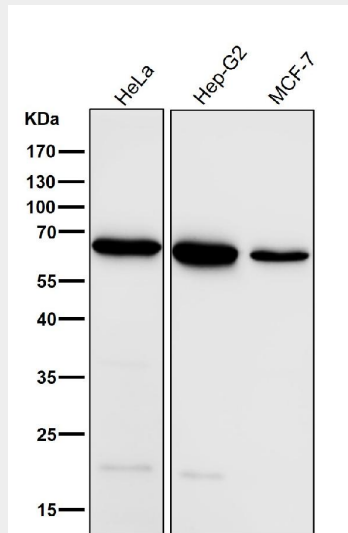
- [Western Blot](#)
- [Blocking Peptides](#)
- [Dot Blot](#)
- [Immunohistochemistry](#)
- [Immunofluorescence](#)
- [Immunoprecipitation](#)
- [Flow Cytometry](#)
- [Cell Culture](#)

Anti-ACADVL/VLCAD Rabbit Monoclonal Antibody - Images





All lanes use the Antibody at 1:5K dilution for 1 hour at room temperature.



All lanes use the Antibody at 1:5K dilution for 1 hour at room temperature.