

Anti-RAC3 Rabbit Monoclonal Antibody
Catalog # ABO16748**Specification****Anti-RAC3 Rabbit Monoclonal Antibody - Product Information**

Application	WB, IHC
Primary Accession	P60763
Host	Rabbit
Isotype	Rabbit IgG
Reactivity	Rat, Human, Mouse
Clonality	Monoclonal
Format	Liquid

Description

Anti-RAC3 Rabbit Monoclonal Antibody . Tested in WB, IHC applications. This antibody reacts with Human, Mouse, Rat.

Anti-RAC3 Rabbit Monoclonal Antibody - Additional Information

Gene ID 5881

Other Names

Ras-related C3 botulinum toxin substrate 3, 3.6.5.2, p21-Rac3, RAC3 ([HGNC:9803](http://www.genenames.org/cgi-bin/gene_symbol_report?hgnc_id=9803))

Application Details

WB 1:500-1:2000
IHC 1:50-1:200

Contents

Rabbit IgG in phosphate buffered saline, pH 7.4, 150mM NaCl, 0.02% sodium azide and 50% glycerol, 0.4-0.5mg/ml BSA.

Immunogen

A synthesized peptide derived from human RAC3

Purification

Affinity-chromatography

Storage

Store at -20°C for one year. For short term storage and frequent use, store at 4°C for up to one month. Avoid repeated freeze-thaw cycles.

Anti-RAC3 Rabbit Monoclonal Antibody - Protein Information

Name RAC3 ([HGNC:9803](#))

Function

Plasma membrane-associated small GTPase which cycles between an active GTP-bound and inactive GDP-bound state. In active state binds to a variety of effector proteins to regulate cellular responses, such as cell spreading and the formation of actin-based protusions including lamellipodia and membrane ruffles. Promotes cell adhesion and spreading on fibrinogen in a CIB1 and alpha-IIb/beta3 integrin-mediated manner.

Cellular Location

Cytoplasm. Endomembrane system. Cell projection, lamellipodium. Cytoplasm, perinuclear region. Cell membrane. Cytoplasm, cytoskeleton. Note=Membrane-associated when activated. Colocalizes with NRBP to endomembranes and at the cell periphery in lamellipodia Colocalized with CIB1 in the perinuclear area and at the cell periphery

Tissue Location

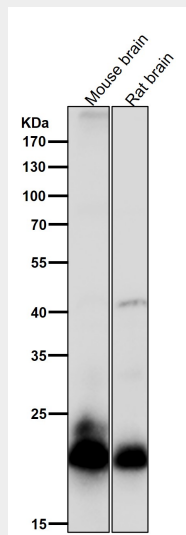
Highest levels in brain, also detected in heart, placenta and pancreas

Anti-RAC3 Rabbit Monoclonal Antibody - Protocols

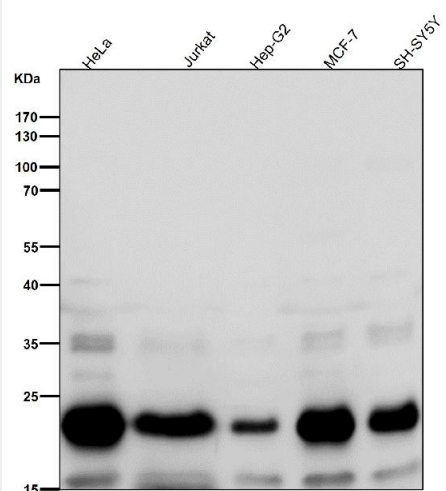
Provided below are standard protocols that you may find useful for product applications.

- [Western Blot](#)
- [Blocking Peptides](#)
- [Dot Blot](#)
- [Immunohistochemistry](#)
- [Immunofluorescence](#)
- [Immunoprecipitation](#)
- [Flow Cytometry](#)
- [Cell Culture](#)

Anti-RAC3 Rabbit Monoclonal Antibody - Images



All lanes use the Antibody at 1:2K dilution for 1 hour at room temperature.



All lanes use the Antibody at 1:2K dilution for 1 hour at room temperature.