

**Anti-ACBD3 Rabbit Monoclonal Antibody**  
Catalog # ABO16741

**Specification**

---

**Anti-ACBD3 Rabbit Monoclonal Antibody - Product Information**

Application	WB
Primary Accession	<a href="#">Q9H3P7</a>
Host	Rabbit
Isotype	Rabbit IgG
Reactivity	Human
Clonality	Monoclonal
Format	Liquid

**Description**

Anti-ACBD3 Rabbit Monoclonal Antibody . Tested in WB applications. This antibody reacts with Human.

**Anti-ACBD3 Rabbit Monoclonal Antibody - Additional Information**

**Gene ID** 64746

**Other Names**

Golgi resident protein GCP60, Acyl-CoA-binding domain-containing protein 3, Golgi complex-associated protein 1, GOCAP1, Golgi phosphoprotein 1, GOLPH1, PBR- and PKA-associated protein 7, Peripheral benzodiazepine receptor-associated protein PAP7, Golgi resident protein GCP60, N-terminally processed, ACBD3, GCP60, GOCAP1, GOLPH1

**Application Details**

WB 1:500-1:2000

**Contents**

Rabbit IgG in phosphate buffered saline, pH 7.4, 150mM NaCl, 0.02% sodium azide and 50% glycerol, 0.4-0.5mg/ml BSA.

**Immunogen**

A synthesized peptide derived from human ACBD3

**Purification**

Affinity-chromatography

**Storage**

**Store at -20°C for one year. For short term storage and frequent use, store at 4°C for up to one month. Avoid repeated freeze-thaw cycles.**

**Anti-ACBD3 Rabbit Monoclonal Antibody - Protein Information**

**Name** ACBD3

**Synonyms** GCP60, GOCAP1, GOLPH1

**Function**

Involved in the maintenance of Golgi structure by interacting with giantin, affecting protein transport between the endoplasmic reticulum and Golgi (PubMed:<a href="http://www.uniprot.org/citations/11590181" target="\_blank">11590181</a>). Involved in hormone-induced steroid biosynthesis in testicular Leydig cells (By similarity). Recruits PI4KB to the Golgi apparatus membrane; enhances the enzyme activity of PI4KB activity via its membrane recruitment thereby increasing the local concentration of the substrate in the vicinity of the kinase (PubMed:<a href="http://www.uniprot.org/citations/27009356" target="\_blank">27009356</a>).

**Cellular Location**

Golgi apparatus membrane; Peripheral membrane protein; Cytoplasmic side. Mitochondrion. Note=Also mitochondrial (via its interaction with PBR).

**Tissue Location**

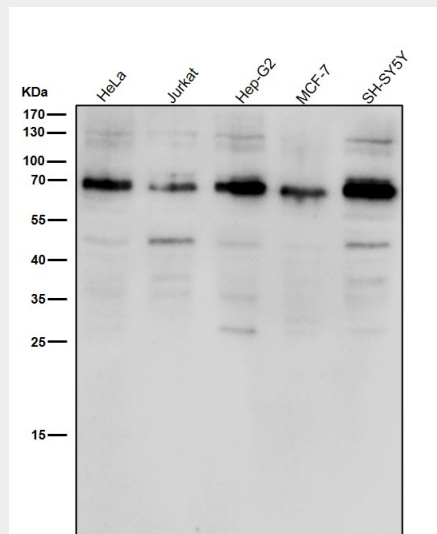
Ubiquitous, with highest expression in testis and ovary.

**Anti-ACBD3 Rabbit Monoclonal Antibody - Protocols**

Provided below are standard protocols that you may find useful for product applications.

- [Western Blot](#)
- [Blocking Peptides](#)
- [Dot Blot](#)
- [Immunohistochemistry](#)
- [Immunofluorescence](#)
- [Immunoprecipitation](#)
- [Flow Cytometry](#)
- [Cell Culture](#)

**Anti-ACBD3 Rabbit Monoclonal Antibody - Images**



All lanes use the Antibody at 1:1K dilution for 1 hour at room temperature.