

## Anti-Phospho-CRMP2 (T514) Rabbit Monoclonal Antibody Catalog # ABO16739

### Specification

---

#### Anti-Phospho-CRMP2 (T514) Rabbit Monoclonal Antibody - Product Information

Application	WB
Primary Accession	<a href="#">Q16555</a>
Host	Rabbit
Isotype	Rabbit IgG
Reactivity	Rat, Human, Mouse
Clonality	Monoclonal
Format	Liquid

#### Description

Anti-Phospho-CRMP2 (T514) Rabbit Monoclonal Antibody . Tested in WB applications. This antibody reacts with Human, Mouse, Rat.

#### Anti-Phospho-CRMP2 (T514) Rabbit Monoclonal Antibody - Additional Information

Gene ID 1808

#### Other Names

Dihydropyrimidinase-related protein 2, DRP-2, Collapsin response mediator protein 2, CRMP-2, N2A3, Unc-33-like phosphoprotein 2, ULIP-2, DPYSL2, CRMP2, ULIP2

#### Application Details

WB 1:500-1:2000

#### Contents

Rabbit IgG in phosphate buffered saline, pH 7.4, 150mM NaCl, 0.02% sodium azide and 50% glycerol, 0.4-0.5mg/ml BSA.

#### Immunogen

A synthesized peptide derived from human Phospho-CRMP2 (T514)

#### Purification

Affinity-chromatography

Storage

**Store at -20°C for one year. For short term storage and frequent use, store at 4°C for up to one month. Avoid repeated freeze-thaw cycles.**

#### Anti-Phospho-CRMP2 (T514) Rabbit Monoclonal Antibody - Protein Information

Name DPYSL2

Synonyms CRMP2, ULIP2

### Function

Plays a role in neuronal development and polarity, as well as in axon growth and guidance, neuronal growth cone collapse and cell migration. Necessary for signaling by class 3 semaphorins and subsequent remodeling of the cytoskeleton. May play a role in endocytosis.

### Cellular Location

Cytoplasm, cytosol. Cytoplasm, cytoskeleton. Membrane. Note=Tightly but non-covalently associated with membranes

### Tissue Location

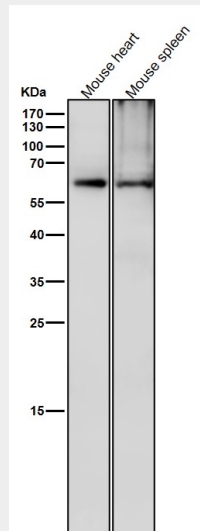
Ubiquitous.

## Anti-Phospho-CRMP2 (T514) Rabbit Monoclonal Antibody - Protocols

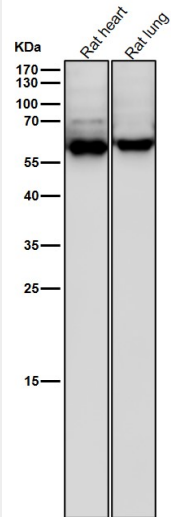
Provided below are standard protocols that you may find useful for product applications.

- [Western Blot](#)
- [Blocking Peptides](#)
- [Dot Blot](#)
- [Immunohistochemistry](#)
- [Immunofluorescence](#)
- [Immunoprecipitation](#)
- [Flow Cytometry](#)
- [Cell Culture](#)

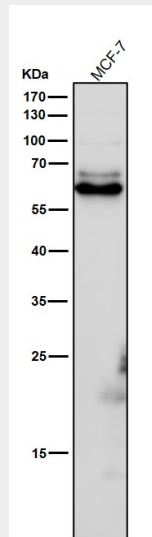
## Anti-Phospho-CRMP2 (T514) Rabbit Monoclonal Antibody - Images



All lanes use the Antibody at 1:6K dilution for 1 hour at room temperature.



All lanes use the Antibody at 1:6K dilution for 1 hour at room temperature.



All lanes use the Antibody at 1:6K dilution for 1 hour at room temperature.