

**Anti-Phospho-CrkL (Y207) Rabbit Monoclonal Antibody**  
Catalog # ABO16737**Specification**

---

**Anti-Phospho-CrkL (Y207) Rabbit Monoclonal Antibody - Product Information**

Application	WB
Primary Accession	<a href="#">P46109</a>
Host	Rabbit
Isotype	Rabbit IgG
Reactivity	Human
Clonality	Monoclonal
Format	Liquid

**Description**

Anti-Phospho-CrkL (Y207) Rabbit Monoclonal Antibody . Tested in WB applications. This antibody reacts with Human.

**Anti-Phospho-CrkL (Y207) Rabbit Monoclonal Antibody - Additional Information**

**Gene ID** 1399

**Other Names**

Crk-like protein, CRKL

**Application Details**

WB 1:500-1:2000

**Contents**

Rabbit IgG in phosphate buffered saline, pH 7.4, 150mM NaCl, 0.02% sodium azide and 50% glycerol, 0.4-0.5mg/ml BSA.

**Immunogen**

A synthesized peptide derived from human Phospho-CrkL (Y207)

**Purification**

Affinity-chromatography

**Storage**

**Store at -20°C for one year. For short term storage and frequent use, store at 4°C for up to one month. Avoid repeated freeze-thaw cycles.**

**Anti-Phospho-CrkL (Y207) Rabbit Monoclonal Antibody - Protein Information**

**Name** CRKL

**Function**

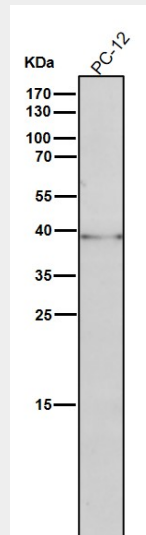
May mediate the transduction of intracellular signals.

## Anti-Phospho-CrkL (Y207) Rabbit Monoclonal Antibody - Protocols

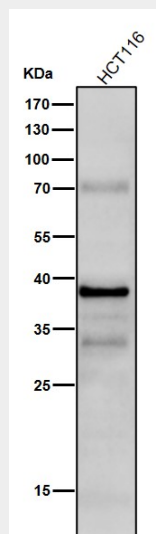
Provided below are standard protocols that you may find useful for product applications.

- [Western Blot](#)
- [Blocking Peptides](#)
- [Dot Blot](#)
- [Immunohistochemistry](#)
- [Immunofluorescence](#)
- [Immunoprecipitation](#)
- [Flow Cytometry](#)
- [Cell Culture](#)

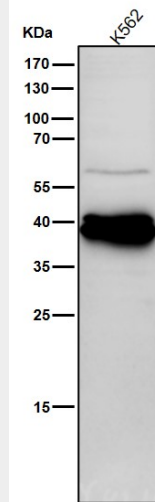
## Anti-Phospho-CrkL (Y207) Rabbit Monoclonal Antibody - Images



All lanes use the Antibody at 1:1K dilution for 1 hour at room temperature.



All lanes use the Antibody at 1:1K dilution for 1 hour at room temperature.



All lanes use the Antibody at 1:1K dilution for 1 hour at room temperature.