

Anti-phospho-Phospholipase C gamma 1/PLC-gamma-1 (Y1253) Rabbit Monoclonal Antibody

Catalog # ABO16734

Specification

Anti-phospho-Phospholipase C gamma 1/PLC-gamma-1 (Y1253) Rabbit Monoclonal Antibody - Product Information

Application	WB
Primary Accession	P19174
Host	Rabbit
Isotype	Rabbit IgG
Reactivity	Human
Clonality	Monoclonal
Format	Liquid

Description

Anti-phospho-Phospholipase C gamma 1/PLC-gamma-1 (Y1253) Rabbit Monoclonal Antibody . Tested in WB applications. This antibody reacts with Human.

Anti-phospho-Phospholipase C gamma 1/PLC-gamma-1 (Y1253) Rabbit Monoclonal Antibody - Additional Information

Gene ID 5335

Other Names

1-phosphatidylinositol 4, 5-bisphosphate phosphodiesterase gamma-1, 3.1.4.11, PLC-148, Phosphoinositide phospholipase C-gamma-1, Phospholipase C-II, PLC-II, Phospholipase C-gamma-1, PLC-gamma-1, PLCG1 (http://www.genenames.org/cgi-bin/gene_symbol_report?hgnc_id=9065 target="_blank">HGNC:9065), PLC1

Application Details

WB 1:500-1:2000

Contents

Rabbit IgG in phosphate buffered saline, pH 7.4, 150mM NaCl, 0.02% sodium azide and 50% glycerol, 0.4-0.5mg/ml BSA.

Immunogen

A synthesized peptide derived from human phospho-Phospholipase C gamma 1/PLC-gamma-1 (Y1253)

Purification

Affinity-chromatography

Storage

Store at -20°C for one year. For short term storage and frequent use, store at 4°C for up to one month. Avoid repeated freeze-thaw cycles.

Anti-phospho-Phospholipase C gamma 1/PLC-gamma-1 (Y1253) Rabbit Monoclonal Antibody - Protein Information

Name PLCG1 ([HGNC:9065](#))

Synonyms PLC1

Function

Mediates the production of the second messenger molecules diacylglycerol (DAG) and inositol 1,4,5-trisphosphate (IP3). Plays an important role in the regulation of intracellular signaling cascades. Becomes activated in response to ligand-mediated activation of receptor-type tyrosine kinases, such as PDGFRA, PDGFRB, EGFR, FGFR1, FGFR2, FGFR3 and FGFR4 (By similarity). Plays a role in actin reorganization and cell migration (PubMed:[17229814](http://www.uniprot.org/citations/17229814)). Guanine nucleotide exchange factor that binds the GTPase DNMI and catalyzes the dissociation of GDP, allowing a GTP molecule to bind in its place, therefore enhancing DNMI-dependent endocytosis (By similarity).

Cellular Location

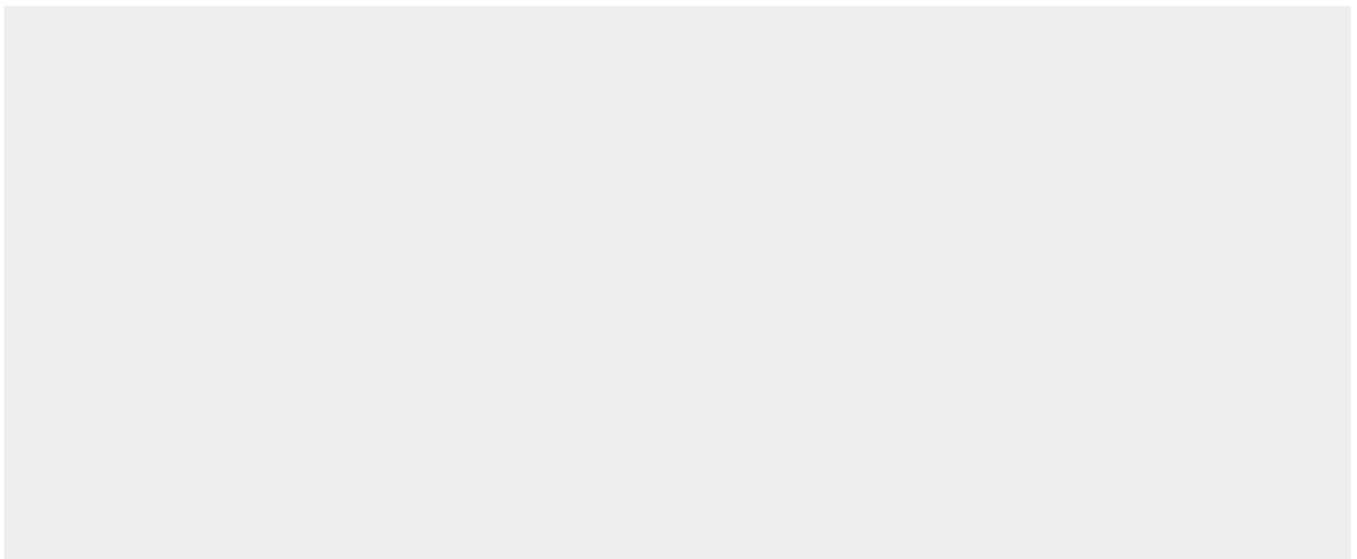
Cell projection, lamellipodium. Cell projection, ruffle. Note=Rapidly redistributed to ruffles and lamellipodia structures in response to epidermal growth factor (EGF) treatment.

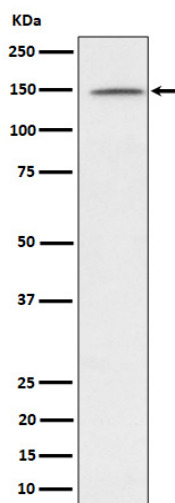
Anti-phospho-Phospholipase C gamma 1/PLC-gamma-1 (Y1253) Rabbit Monoclonal Antibody - Protocols

Provided below are standard protocols that you may find useful for product applications.

- [Western Blot](#)
- [Blocking Peptides](#)
- [Dot Blot](#)
- [Immunohistochemistry](#)
- [Immunofluorescence](#)
- [Immunoprecipitation](#)
- [Flow Cytometry](#)
- [Cell Culture](#)

Anti-phospho-Phospholipase C gamma 1/PLC-gamma-1 (Y1253) Rabbit Monoclonal Antibody - Images





Western blot analysis of phospho-Phospholipase C gamma 1/PLC-gamma-1 (Y1253) expression in Jurkat treated with Pervanadate lysate.