

Anti-Phospho-P70 S6 Kinase beta (S371) Rabbit Monoclonal Antibody
Catalog # ABO16733

Specification

Anti-Phospho-P70 S6 Kinase beta (S371) Rabbit Monoclonal Antibody - Product Information

Application	WB
Primary Accession	Q9UBS0
Host	Rabbit
Isotype	Rabbit IgG
Reactivity	Rat, Human, Mouse
Clonality	Monoclonal
Format	Liquid

Description

Anti-Phospho-P70 S6 Kinase beta (S371) Rabbit Monoclonal Antibody . Tested in WB applications. This antibody reacts with Human, Mouse, Rat.

Anti-Phospho-P70 S6 Kinase beta (S371) Rabbit Monoclonal Antibody - Additional Information

Gene ID 6199

Other Names

Ribosomal protein S6 kinase beta-2, S6K-beta-2, S6K2, 2.7.11.1, 70 kDa ribosomal protein S6 kinase 2, P70S6K2, p70-S6K 2, S6 kinase-related kinase, SRK, Serine/threonine-protein kinase 14B, p70 ribosomal S6 kinase beta, S6K-beta, p70 S6 kinase beta, p70 S6K-beta, p70 S6KB, p70-beta, RPS6KB2, STK14B

Application Details

WB 1:500-1:2000

Contents

Rabbit IgG in phosphate buffered saline, pH 7.4, 150mM NaCl, 0.02% sodium azide and 50% glycerol, 0.4-0.5mg/ml BSA.

Immunogen

A synthesized peptide derived from human Phospho-P70 S6 Kinase beta (S371)

Purification

Affinity-chromatography

Storage

Store at -20°C for one year. For short term storage and frequent use, store at 4°C for up to one month. Avoid repeated freeze-thaw cycles.

Anti-Phospho-P70 S6 Kinase beta (S371) Rabbit Monoclonal Antibody - Protein Information

Name RPS6KB2

Synonyms STK14B

Function

Phosphorylates specifically ribosomal protein S6 (PubMed:29750193). Seems to act downstream of mTOR signaling in response to growth factors and nutrients to promote cell proliferation, cell growth and cell cycle progression in an alternative pathway regulated by MEAK7 (PubMed:29750193).

Cellular Location

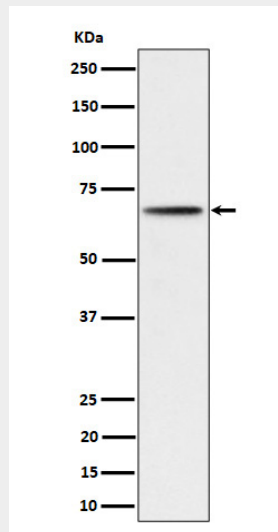
Cytoplasm. Nucleus.

Anti-Phospho-P70 S6 Kinase beta (S371) Rabbit Monoclonal Antibody - Protocols

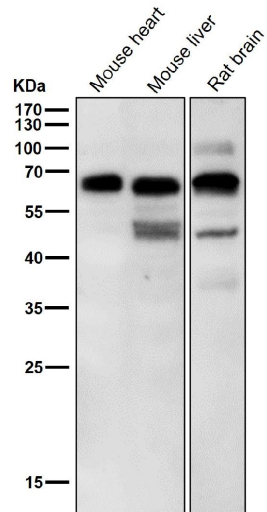
Provided below are standard protocols that you may find useful for product applications.

- [Western Blot](#)
- [Blocking Peptides](#)
- [Dot Blot](#)
- [Immunohistochemistry](#)
- [Immunofluorescence](#)
- [Immunoprecipitation](#)
- [Flow Cytometry](#)
- [Cell Culture](#)

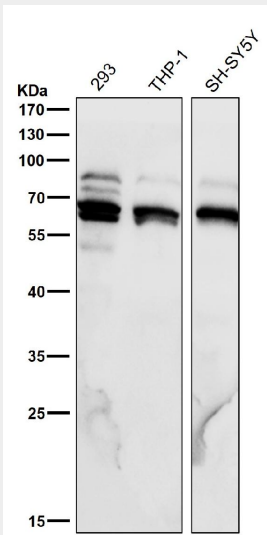
Anti-Phospho-P70 S6 Kinase beta (S371) Rabbit Monoclonal Antibody - Images



Western blot analysis of Phospho-P70 S6 Kinase beta (S371) expression in 293 cell lysate.



All lanes use the Antibody at 1:6K dilution for 1 hour at room temperature.



All lanes use the Antibody at 1:6K dilution for 1 hour at room temperature.