

**Anti-Choline Acetyltransferase Rabbit Monoclonal Antibody**  
Catalog # ABO16704**Specification****Anti-Choline Acetyltransferase Rabbit Monoclonal Antibody - Product Information**

Application	WB, IHC
Primary Accession	<a href="#">P28329</a>
Host	Rabbit
Isotype	Rabbit IgG
Reactivity	Rat, Mouse
Clonality	Monoclonal
Format	Liquid

**Description**

Anti-Choline Acetyltransferase Rabbit Monoclonal Antibody . Tested in WB, IHC applications. This antibody reacts with Mouse, Rat.

**Anti-Choline Acetyltransferase Rabbit Monoclonal Antibody - Additional Information**

**Gene ID** 1103

**Other Names**

Choline O-acetyltransferase, CHOACTase, ChAT, Choline acetylase, 2.3.1.6, CHAT

**Application Details**

WB 1:500-1:2000<br>IHC 1:50-1:200

**Contents**

Rabbit IgG in phosphate buffered saline, pH 7.4, 150mM NaCl, 0.02% sodium azide and 50% glycerol, 0.4-0.5mg/ml BSA.

**Immunogen**

A synthesized peptide derived from human Choline Acetyltransferase

**Purification**

Affinity-chromatography

**Storage**

**Store at -20°C for one year. For short term storage and frequent use, store at 4°C for up to one month. Avoid repeated freeze-thaw cycles.**

**Anti-Choline Acetyltransferase Rabbit Monoclonal Antibody - Protein Information**

**Name** CHAT

**Function**

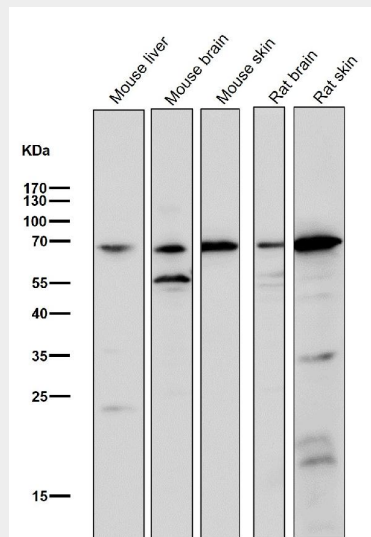
Catalyzes the reversible synthesis of acetylcholine (ACh) from acetyl CoA and choline at cholinergic synapses.

## Anti-Choline Acetyltransferase Rabbit Monoclonal Antibody - Protocols

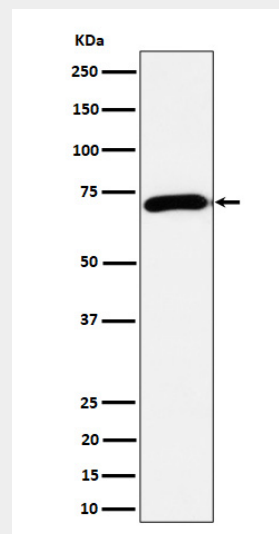
Provided below are standard protocols that you may find useful for product applications.

- [Western Blot](#)
- [Blocking Peptides](#)
- [Dot Blot](#)
- [Immunohistochemistry](#)
- [Immunofluorescence](#)
- [Immunoprecipitation](#)
- [Flow Cytometry](#)
- [Cell Culture](#)

## Anti-Choline Acetyltransferase Rabbit Monoclonal Antibody - Images



All lanes use the Antibody at 1:2K dilution for 1 hour at room temperature.



Western blot analysis of Choline Acetyltransferase expression in Mouse brain cell lysate.