

**Anti-ALDH2 Rabbit Monoclonal Antibody**  
Catalog # ABO16701**Specification**

---

**Anti-ALDH2 Rabbit Monoclonal Antibody - Product Information**

Application	WB
Primary Accession	<a href="#">P05091</a>
Host	Rabbit
Isotype	Rabbit IgG
Reactivity	Rat, Human, Mouse
Clonality	Monoclonal
Format	Liquid

**Description**

Anti-ALDH2 Rabbit Monoclonal Antibody . Tested in WB applications. This antibody reacts with Human, Mouse, Rat.

**Anti-ALDH2 Rabbit Monoclonal Antibody - Additional Information**

**Gene ID** 217

**Other Names**

Aldehyde dehydrogenase, mitochondrial, 1.2.1.3, ALDH class 2, ALDH-E2, ALDHI, ALDH2, ALDM

**Application Details**

WB 1:500-1:2000

**Contents**

Rabbit IgG in phosphate buffered saline, pH 7.4, 150mM NaCl, 0.02% sodium azide and 50% glycerol, 0.4-0.5mg/ml BSA.

**Immunogen**

A synthesized peptide derived from human ALDH2

**Purification**

Affinity-chromatography

**Storage**

**Store at -20°C for one year. For short term storage and frequent use, store at 4°C for up to one month. Avoid repeated freeze-thaw cycles.**

**Anti-ALDH2 Rabbit Monoclonal Antibody - Protein Information**

**Name** ALDH2

**Synonyms** ALDM

**Function**

Required for clearance of cellular formaldehyde, a cytotoxic and carcinogenic metabolite that induces DNA damage.

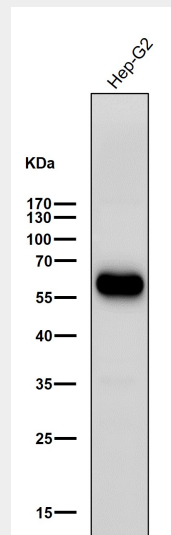
**Cellular Location**  
Mitochondrion matrix.

### Anti-ALDH2 Rabbit Monoclonal Antibody - Protocols

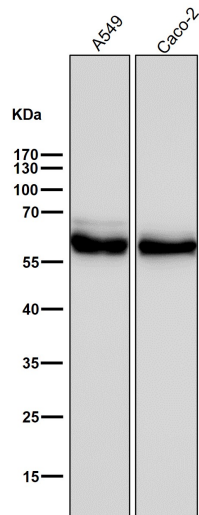
Provided below are standard protocols that you may find useful for product applications.

- [Western Blot](#)
- [Blocking Peptides](#)
- [Dot Blot](#)
- [Immunohistochemistry](#)
- [Immunofluorescence](#)
- [Immunoprecipitation](#)
- [Flow Cytometry](#)
- [Cell Culture](#)

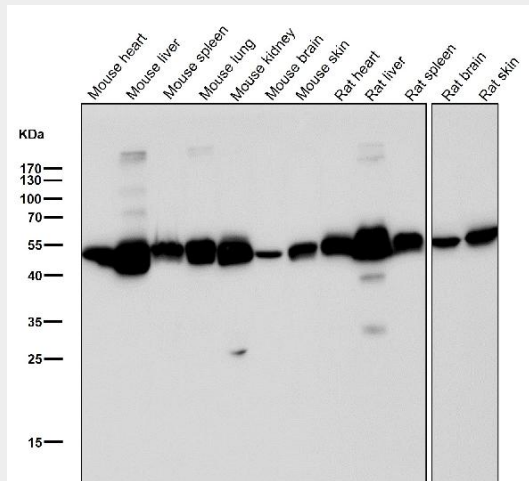
### Anti-ALDH2 Rabbit Monoclonal Antibody - Images



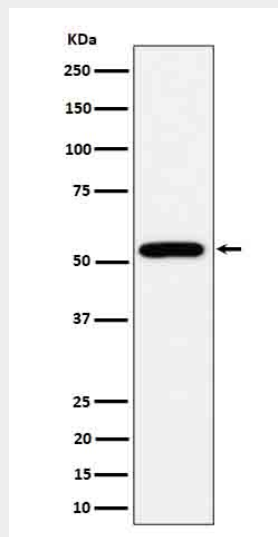
All lanes use the Antibody at 1:3K dilution for 1 hour at room temperature.



All lanes use the Antibody at 1:3K dilution for 1 hour at room temperature.



All lanes use the Antibody at 1:3K dilution for 1 hour at room temperature.



Western blot analysis of ALDH2 expression in HepG2 cell lysate.