

Anti-C1QA Rabbit Monoclonal Antibody
Catalog # ABO16686**Specification**

Anti-C1QA Rabbit Monoclonal Antibody - Product Information

| | |
|-------------------|------------------------|
| Application | WB, IHC |
| Primary Accession | P02745 |
| Host | Rabbit |
| Isotype | Rabbit IgG |
| Reactivity | Rat, Human |
| Clonality | Monoclonal |
| Format | Liquid |

Description

Anti-C1QA Rabbit Monoclonal Antibody . Tested in WB, IHC applications. This antibody reacts with Human, Rat.

Anti-C1QA Rabbit Monoclonal Antibody - Additional Information

Gene ID 712

Other Names

Complement C1q subcomponent subunit A, C1QA

Application Details

WB 1:500-1:2000
IHC 1:50-1:200

Contents

Rabbit IgG in phosphate buffered saline, pH 7.4, 150mM NaCl, 0.02% sodium azide and 50% glycerol, 0.4-0.5mg/ml BSA.

Immunogen

A synthesized peptide derived from human C1QA

Purification

Affinity-chromatography

Storage

Store at -20°C for one year. For short term storage and frequent use, store at 4°C for up to one month. Avoid repeated freeze-thaw cycles.

Anti-C1QA Rabbit Monoclonal Antibody - Protein Information

Name C1QA

Function

C1q associates with the proenzymes C1r and C1s to yield C1, the first component of the serum complement system. The collagen-like regions of C1q interact with the Ca(2+)-dependent

C1r(2)C1s(2) proenzyme complex, and efficient activation of C1 takes place on interaction of the globular heads of C1q with the Fc regions of IgG or IgM antibody present in immune complexes.

Cellular Location

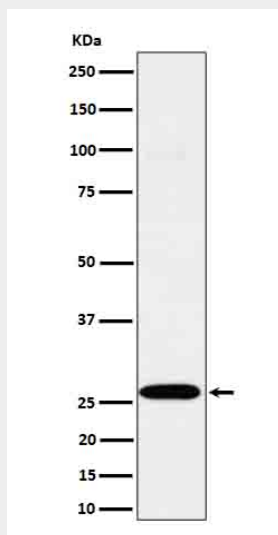
Secreted.

Anti-C1QA Rabbit Monoclonal Antibody - Protocols

Provided below are standard protocols that you may find useful for product applications.

- [Western Blot](#)
- [Blocking Peptides](#)
- [Dot Blot](#)
- [Immunohistochemistry](#)
- [Immunofluorescence](#)
- [Immunoprecipitation](#)
- [Flow Cytometry](#)
- [Cell Culture](#)

Anti-C1QA Rabbit Monoclonal Antibody - Images



Western blot analysis of C1QA expression in C6 cell lysate.