

Anti-TFIIE alpha Rabbit Monoclonal Antibody Catalog # ABO16682

Specification

Anti-TFIIE alpha Rabbit Monoclonal Antibody - Product Information

Application	WB, IHC
Primary Accession	P29083
Host	Rabbit
Isotype	Rabbit IgG
Reactivity	Rat, Human, Mouse
Clonality	Monoclonal
Format	Liquid

Description

Anti-TFIIE alpha Rabbit Monoclonal Antibody . Tested in WB, IHC, ICC/IF applications. This antibody reacts with Human, Mouse, Rat.

Anti-TFIIE alpha Rabbit Monoclonal Antibody - Additional Information

Gene ID 2960

Other Names

General transcription factor IIE subunit 1, General transcription factor IIE 56 kDa subunit, Transcription initiation factor IIE subunit alpha, TFIIE-alpha, GTF2E1, TF2E1

Application Details

WB 1:500-1:2000
IHC 1:50-1:200
ICC/IF 1:50-1:200

Contents

Rabbit IgG in phosphate buffered saline, pH 7.4, 150mM NaCl, 0.02% sodium azide and 50% glycerol, 0.4-0.5mg/ml BSA.

Immunogen

A synthesized peptide derived from human TFIIE alpha

Purification

Affinity-chromatography

Storage

Store at -20°C for one year. For short term storage and frequent use, store at 4°C for up to one month. Avoid repeated freeze-thaw cycles.

Anti-TFIIE alpha Rabbit Monoclonal Antibody - Protein Information

Name GTF2E1

Synonyms TF2E1

Function

Recruits TFIID to the initiation complex and stimulates the RNA polymerase II C-terminal domain kinase and DNA-dependent ATPase activities of TFIID. Both TFIID and TFIIE are required for promoter clearance by RNA polymerase.

Cellular Location

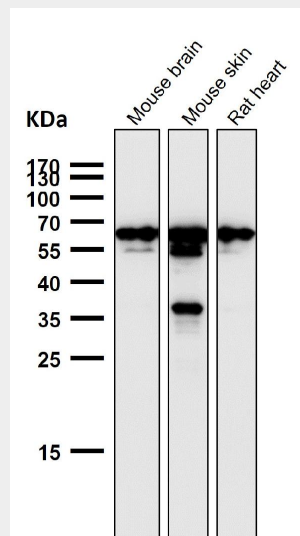
Nucleus

Anti-TFIIE alpha Rabbit Monoclonal Antibody - Protocols

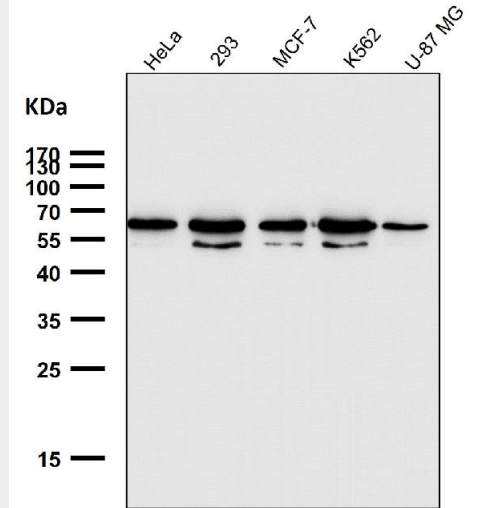
Provided below are standard protocols that you may find useful for product applications.

- [Western Blot](#)
- [Blocking Peptides](#)
- [Dot Blot](#)
- [Immunohistochemistry](#)
- [Immunofluorescence](#)
- [Immunoprecipitation](#)
- [Flow Cytometry](#)
- [Cell Culture](#)

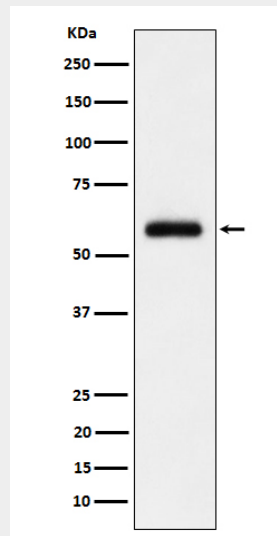
Anti-TFIIE alpha Rabbit Monoclonal Antibody - Images



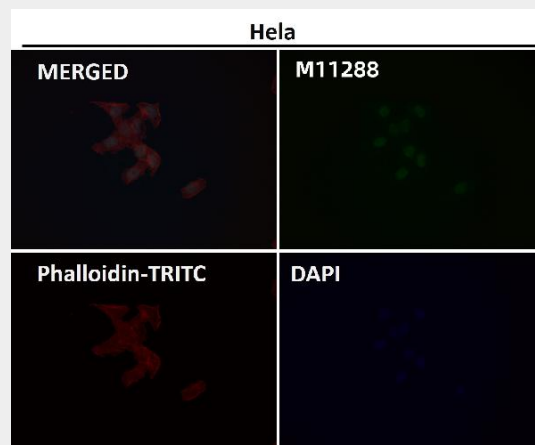
All lanes use the Antibody at 1:1K dilution for 1 hour at room temperature.



All lanes use the Antibody at 1:1K dilution for 1 hour at room temperature.

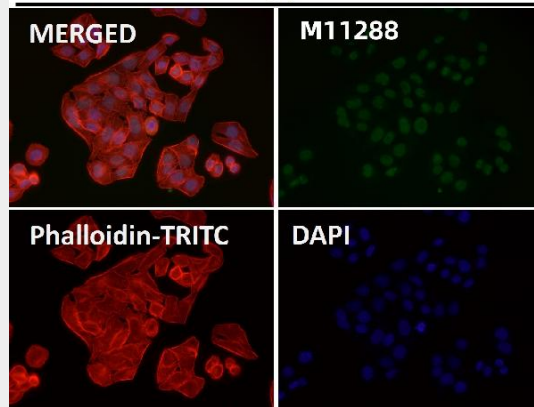


Western blot analysis of TFIIE alpha expression in HeLa cell lysate.



Immunofluorescent analysis using the Antibody at 1:50 dilution.

Hela



Immunofluorescent analysis using the Antibody at 1:150 dilution.