

Anti-CXCR6 / CD186 Rabbit Monoclonal Antibody
Catalog # ABO16681

Specification

Anti-CXCR6 / CD186 Rabbit Monoclonal Antibody - Product Information

Application	WB
Primary Accession	O00574
Host	Rabbit
Isotype	Rabbit IgG
Reactivity	Human
Clonality	Monoclonal
Format	Liquid

Description

Anti-CXCR6 / CD186 Rabbit Monoclonal Antibody . Tested in WB applications. This antibody reacts with Human.

Anti-CXCR6 / CD186 Rabbit Monoclonal Antibody - Additional Information

Gene ID 10663

Other Names

C-X-C chemokine receptor type 6, CXC-R6, CXCR-6, CDw186, G-protein coupled receptor STRL33, G-protein coupled receptor bonzo, CD186, CXCR6, BONZO, STRL33, TYMSTR

Application Details

WB 1:500-1:2000

Contents

Rabbit IgG in phosphate buffered saline, pH 7.4, 150mM NaCl, 0.02% sodium azide and 50% glycerol, 0.4-0.5mg/ml BSA.

Immunogen

A synthesized peptide derived from human CXCR6 / CD186

Purification

Affinity-chromatography

Storage

Store at -20°C for one year. For short term storage and frequent use, store at 4°C for up to one month. Avoid repeated freeze-thaw cycles.

Anti-CXCR6 / CD186 Rabbit Monoclonal Antibody - Protein Information

Name CXCR6

Synonyms BONZO, STRL33, TYMSTR

Function

Receptor for the C-X-C chemokine CXCL16. Used as a coreceptor by SIVs and by strains of HIV-2 and m-tropic HIV-1.

Cellular Location

Cell membrane; Multi-pass membrane protein.

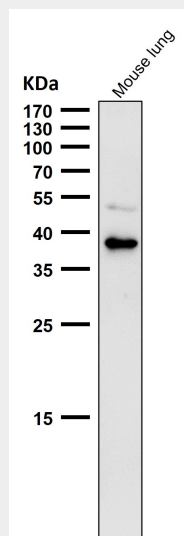
Tissue Location

Expressed in lymphoid tissues and activated T cells

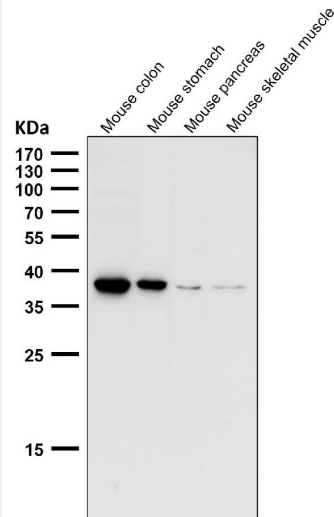
Anti-CXCR6 / CD186 Rabbit Monoclonal Antibody - Protocols

Provided below are standard protocols that you may find useful for product applications.

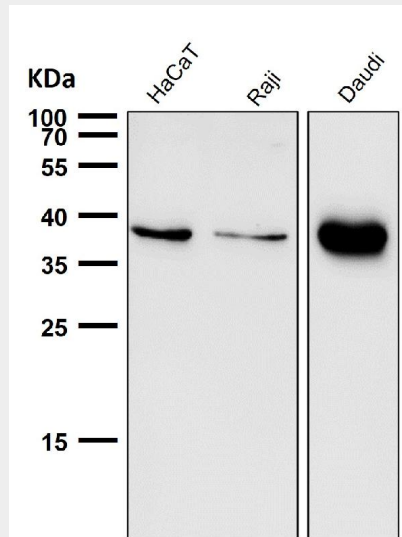
- [Western Blot](#)
- [Blocking Peptides](#)
- [Dot Blot](#)
- [Immunohistochemistry](#)
- [Immunofluorescence](#)
- [Immunoprecipitation](#)
- [Flow Cytometry](#)
- [Cell Culture](#)

Anti-CXCR6 / CD186 Rabbit Monoclonal Antibody - Images

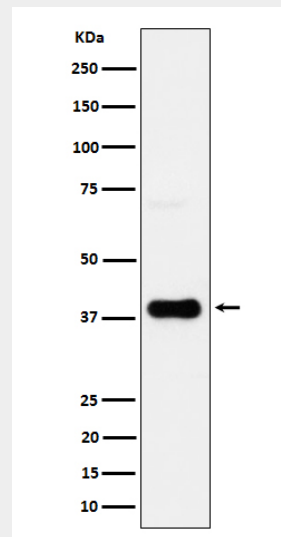
All lanes use the Antibody at 1:1K dilution for 1 hour at room temperature.



All lanes use the Antibody at 1:1K dilution for 1 hour at room temperature.



All lanes use the Antibody at 1:1K dilution for 1 hour at room temperature.



Western blot analysis of CXCR6/CD186 expression in JAR cell lysate.