

Anti-Phospho-LRP6 (S1490) Rabbit Monoclonal Antibody Catalog # ABO16671

Specification

Anti-Phospho-LRP6 (S1490) Rabbit Monoclonal Antibody - Product Information

Application	WB
Primary Accession	O75581
Host	Rabbit
Isotype	Rabbit IgG
Reactivity	Human
Clonality	Monoclonal
Format	Liquid

Description

Anti-Phospho-LRP6 (S1490) Rabbit Monoclonal Antibody . Tested in WB applications. This antibody reacts with Human.

Anti-Phospho-LRP6 (S1490) Rabbit Monoclonal Antibody - Additional Information

Gene ID 4040

Other Names

Low-density lipoprotein receptor-related protein 6, LRP-6, LRP6

Application Details

WB 1:500-1:2000

Contents

Rabbit IgG in phosphate buffered saline, pH 7.4, 150mM NaCl, 0.02% sodium azide and 50% glycerol, 0.4-0.5mg/ml BSA.

Immunogen

A synthesized peptide derived from human Phospho-LRP6 (S1490)

Purification

Affinity-chromatography

Storage

Store at -20°C for one year. For short term storage and frequent use, store at 4°C for up to one month. Avoid repeated freeze-thaw cycles.

Anti-Phospho-LRP6 (S1490) Rabbit Monoclonal Antibody - Protein Information

Name LRP6

Function

Component of the Wnt-Fzd-LRP5-LRP6 complex that triggers beta-catenin signaling through inducing aggregation of receptor-ligand complexes into ribosome-sized signalosomes. Cell-surface

coreceptor of Wnt/beta-catenin signaling, which plays a pivotal role in bone formation. The Wnt-induced Fzd/LRP6 coreceptor complex recruits DVL1 polymers to the plasma membrane which, in turn, recruits the AXIN1/GSK3B-complex to the cell surface promoting the formation of signalosomes and inhibiting AXIN1/GSK3-mediated phosphorylation and destruction of beta-catenin. Required for posterior patterning of the epiblast during gastrulation (By similarity).

Cellular Location

Cell membrane; Single-pass type I membrane protein. Endoplasmic reticulum. Membrane raft. Note=On Wnt signaling, undergoes a cycle of caveolin- or clathrin-mediated endocytosis and plasma membrane location. Released from the endoplasmic reticulum on palmitoylation. Mono-ubiquitination retains it in the endoplasmic reticulum in the absence of palmitoylation. On Wnt signaling, phosphorylated, aggregates and colocalizes with AXIN1 and GSK3B at the plasma membrane in LRP6- signalosomes. Chaperoned to the plasma membrane by MESD (By similarity).

Tissue Location

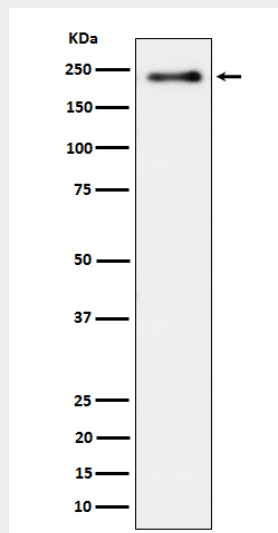
Widely coexpressed with LRP5 during embryogenesis and in adult tissues

Anti-Phospho-LRP6 (S1490) Rabbit Monoclonal Antibody - Protocols

Provided below are standard protocols that you may find useful for product applications.

- [Western Blot](#)
- [Blocking Peptides](#)
- [Dot Blot](#)
- [Immunohistochemistry](#)
- [Immunofluorescence](#)
- [Immunoprecipitation](#)
- [Flow Cytometry](#)
- [Cell Culture](#)

Anti-Phospho-LRP6 (S1490) Rabbit Monoclonal Antibody - Images



Western blot analysis of Phospho-LRP6 (S1490) expression in heLa treated with Calyculin cell lysate.