

Anti-Gamma glutamyl hydrolase Rabbit Monoclonal Antibody Catalog # ABO16646

Specification

Anti-Gamma glutamyl hydrolase Rabbit Monoclonal Antibody - Product Information

Application	WB
Primary Accession	O92820
Host	Rabbit
Isotype	Rabbit IgG
Reactivity	Human
Clonality	Monoclonal
Format	Liquid

Description

Anti-Gamma glutamyl hydrolase Rabbit Monoclonal Antibody . Tested in WB applications. This antibody reacts with Human.

Anti-Gamma glutamyl hydrolase Rabbit Monoclonal Antibody - Additional Information

Gene ID 8836

Other Names

Gamma-glutamyl hydrolase, 3.4.19.9, Conjugase, GH, Gamma-Glu-X carboxypeptidase, GGH ([HGNC:4248](http://www.genenames.org/cgi-bin/gene_symbol_report?hgnc_id=4248))

Application Details

WB 1:500-1:2000

Contents

Rabbit IgG in phosphate buffered saline, pH 7.4, 150mM NaCl, 0.02% sodium azide and 50% glycerol, 0.4-0.5mg/ml BSA.

Immunogen

A synthesized peptide derived from human Gamma glutamyl hydrolase

Purification

Affinity-chromatography

Storage

Store at -20°C for one year. For short term storage and frequent use, store at 4°C for up to one month. Avoid repeated freeze-thaw cycles.

Anti-Gamma glutamyl hydrolase Rabbit Monoclonal Antibody - Protein Information

Name GGH ([HGNC:4248](#))

Function

Hydrolyzes the polyglutamate sidechains of pteroylpolyglutamates. Progressively removes gamma-glutamyl residues from pteroylpoly-gamma-glutamate to yield pteroyl-alpha-glutamate (folic acid) and free glutamate (PubMed:11005824, PubMed:8816764). May play an important role in the bioavailability of dietary pteroylpolyglutamates and in the metabolism of pteroylpolyglutamates and antifolates.

Cellular Location

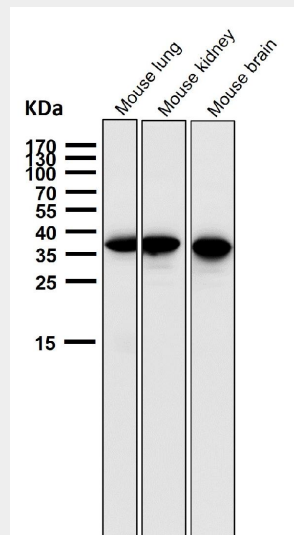
Secreted, extracellular space. Lysosome. Melanosome. Note=While its intracellular location is primarily the lysosome, most of the enzyme activity is secreted Identified by mass spectrometry in melanosome fractions from stage I to stage IV.

Anti-Gamma glutamyl hydrolase Rabbit Monoclonal Antibody - Protocols

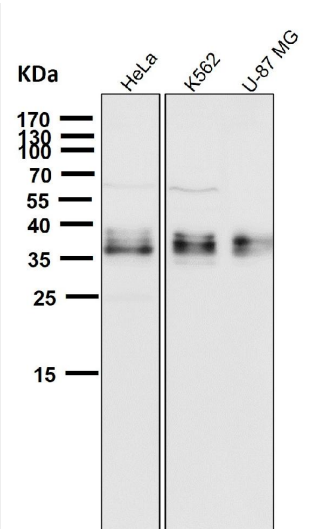
Provided below are standard protocols that you may find useful for product applications.

- [Western Blot](#)
- [Blocking Peptides](#)
- [Dot Blot](#)
- [Immunohistochemistry](#)
- [Immunofluorescence](#)
- [Immunoprecipitation](#)
- [Flow Cytometry](#)
- [Cell Culture](#)

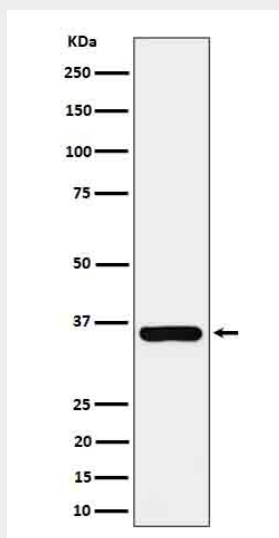
Anti-Gamma glutamyl hydrolase Rabbit Monoclonal Antibody - Images



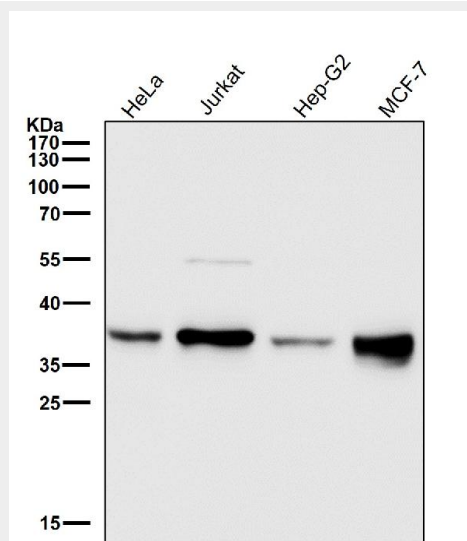
All lanes use the Antibody at 1:1K dilution for 1 hour at room temperature.



All lanes use the Antibody at 1:1K dilution for 1 hour at room temperature.



Western blot analysis of Gamma glutamyl hydrolase expression in MCF7 cell lysate.



All lanes use the Antibody at 1:1K dilution for 1 hour at room temperature.