

Anti-CD125 Rabbit Monoclonal Antibody Catalog # ABO16643

Specification

Anti-CD125 Rabbit Monoclonal Antibody - Product Information

Application	WB
Primary Accession	Q01344
Host	Rabbit
Isotype	Rabbit IgG
Reactivity	Human
Clonality	Monoclonal
Format	Liquid

Description

Anti-CD125 Rabbit Monoclonal Antibody . Tested in WB applications. This antibody reacts with Human.

Anti-CD125 Rabbit Monoclonal Antibody - Additional Information

Gene ID 3568

Other Names

Interleukin-5 receptor subunit alpha, IL-5 receptor subunit alpha, IL-5R subunit alpha, IL-5R-alpha, IL-5RA, CDw125, CD125, IL5RA, IL5R

Application Details

WB 1:500-1:2000

Contents

Rabbit IgG in phosphate buffered saline, pH 7.4, 150mM NaCl, 0.02% sodium azide and 50% glycerol, 0.4-0.5mg/ml BSA.

Immunogen

A synthesized peptide derived from human CD125

Purification

Affinity-chromatography

Storage

Store at -20°C for one year. For short term storage and frequent use, store at 4°C for up to one month. Avoid repeated freeze-thaw cycles.

Anti-CD125 Rabbit Monoclonal Antibody - Protein Information

Name IL5RA

Synonyms IL5R

Function

Cell surface receptor that plays an important role in the survival, differentiation, and chemotaxis of eosinophils (PubMed:9378992). Acts by forming a heterodimeric receptor with CSF2RB subunit and subsequently binding to interleukin-5 (PubMed:1495999, PubMed:22528658). In unstimulated conditions, interacts constitutively with JAK2. Heterodimeric receptor activation leads to JAK2 stimulation and subsequent activation of the JAK-STAT pathway (PubMed:9516124).

Cellular Location

Membrane; Single-pass type I membrane protein.

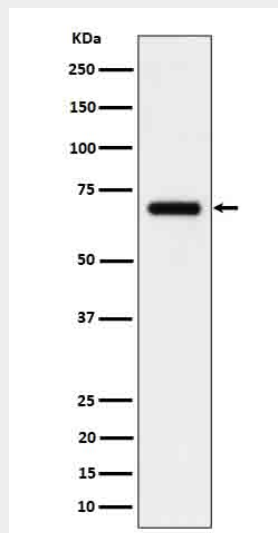
Tissue Location

Expressed on eosinophils and basophils.

Anti-CD125 Rabbit Monoclonal Antibody - Protocols

Provided below are standard protocols that you may find useful for product applications.

- [Western Blot](#)
- [Blocking Peptides](#)
- [Dot Blot](#)
- [Immunohistochemistry](#)
- [Immunofluorescence](#)
- [Immunoprecipitation](#)
- [Flow Cytometry](#)
- [Cell Culture](#)

Anti-CD125 Rabbit Monoclonal Antibody - Images

Western blot analysis of CD125 in Human serum cell lysate.