

Anti-IL12B Rabbit Monoclonal Antibody Catalog # ABO16642

Specification

Anti-IL12B Rabbit Monoclonal Antibody - Product Information

Application	WB, FC
Primary Accession	P29460
Host	Rabbit
Isotype	Rabbit IgG
Reactivity	Human
Clonality	Monoclonal
Format	Liquid

Description

Anti-IL12B Rabbit Monoclonal Antibody . Tested in WB, ICC/IF, Flow Cytometry applications. This antibody reacts with Human.

Anti-IL12B Rabbit Monoclonal Antibody - Additional Information

Gene ID 3593

Other Names

Interleukin-12 subunit beta, IL-12B, Cytotoxic lymphocyte maturation factor 40 kDa subunit, CLMF p40, IL-12 subunit p40, NK cell stimulatory factor chain 2, NKSF2, IL12B, NKSF2

Application Details

WB 1:500-1:2000
ICC/IF 1:50-1:200
FC 1:50

Contents

Rabbit IgG in phosphate buffered saline, pH 7.4, 150mM NaCl, 0.02% sodium azide and 50% glycerol, 0.4-0.5mg/ml BSA.

Immunogen

A synthesized peptide derived from human IL12B

Purification

Affinity-chromatography

Storage

Store at -20°C for one year. For short term storage and frequent use, store at 4°C for up to one month. Avoid repeated freeze-thaw cycles.

Anti-IL12B Rabbit Monoclonal Antibody - Protein Information

Name IL12B

Synonyms NKSF2

Function

Cytokine that can act as a growth factor for activated T and NK cells, enhance the lytic activity of NK/lymphokine-activated killer cells, and stimulate the production of IFN-gamma by resting PBMC.

Cellular Location

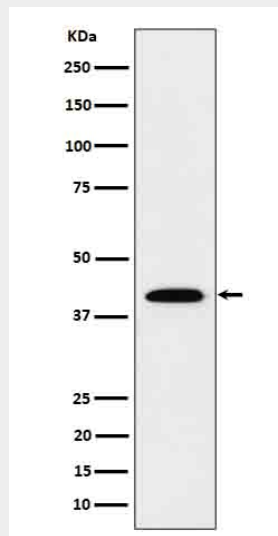
Secreted.

Anti-IL12B Rabbit Monoclonal Antibody - Protocols

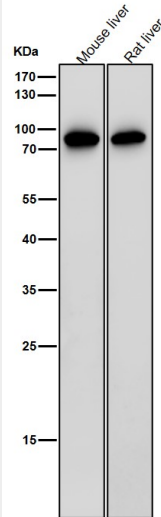
Provided below are standard protocols that you may find useful for product applications.

- [Western Blot](#)
- [Blocking Peptides](#)
- [Dot Blot](#)
- [Immunohistochemistry](#)
- [Immunofluorescence](#)
- [Immunoprecipitation](#)
- [Flow Cytometry](#)
- [Cell Culture](#)

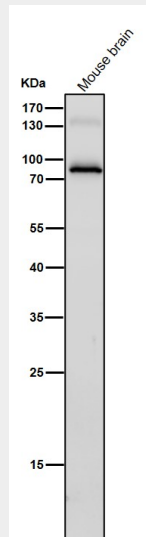
Anti-IL12B Rabbit Monoclonal Antibody - Images



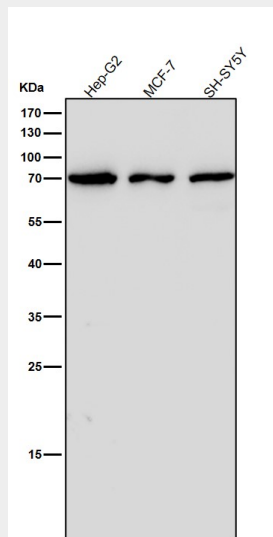
Western blot analysis of IL12B in Recombinant Human IL12B protein cell lysate.



All lanes use the Antibody at 1:2K dilution for 1 hour at room temperature.



All lanes use the Antibody at 1:2K dilution for 1 hour at room temperature.



All lanes use the Antibody at 1:2K dilution for 1 hour at room temperature.