

Anti-IL9 Rabbit Monoclonal Antibody
Catalog # ABO16639

Specification

Anti-IL9 Rabbit Monoclonal Antibody - Product Information

| | |
|-------------------|------------------------|
| Application | WB |
| Primary Accession | P15248 |
| Host | Rabbit |
| Isotype | Rabbit IgG |
| Reactivity | Human |
| Clonality | Monoclonal |
| Format | Liquid |

Description

Anti-IL9 Rabbit Monoclonal Antibody . Tested in WB applications. This antibody reacts with Human.

Anti-IL9 Rabbit Monoclonal Antibody - Additional Information

Gene ID 3578

Other Names

Interleukin-9, IL-9, Cytokine P40, T-cell growth factor P40, IL9

Application Details

WB 1:500-1:2000

Contents

Rabbit IgG in phosphate buffered saline, pH 7.4, 150mM NaCl, 0.02% sodium azide and 50% glycerol, 0.4-0.5mg/ml BSA.

Immunogen

A synthesized peptide derived from human IL9

Purification

Affinity-chromatography

Storage

Store at -20°C for one year. For short term storage and frequent use, store at 4°C for up to one month. Avoid repeated freeze-thaw cycles.

Anti-IL9 Rabbit Monoclonal Antibody - Protein Information

Name IL9

Function

Multifunctional cytokine secreted mainly by T-helper 2 lymphocytes and also mast cells or NKT cells that plays important roles in the immune response against parasites (PubMed:29742432). Affects

intestinal epithelial permeability and adaptive immunity (PubMed:29742432). In addition, induces the differentiation of specific T-cell subsets such as IL-17 producing helper T-cells (TH17) and also proliferation and differentiation of mast cells. Mechanistically, exerts its biological effects through a receptor composed of IL9R subunit and a signal transducing subunit IL2RG. Receptor stimulation results in the rapid activation of JAK1 and JAK3 kinase activities leading to STAT1, STAT3 and STAT5-mediated transcriptional programs. Induction of differentiation genes seems to be mediated by STAT1 alone, while protection of cells from apoptosis depends on STAT3 and STAT5.

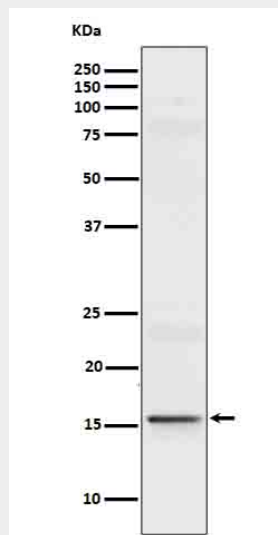
Cellular Location
Secreted.

Anti-IL9 Rabbit Monoclonal Antibody - Protocols

Provided below are standard protocols that you may find useful for product applications.

- [Western Blot](#)
- [Blocking Peptides](#)
- [Dot Blot](#)
- [Immunohistochemistry](#)
- [Immunofluorescence](#)
- [Immunoprecipitation](#)
- [Flow Cytometry](#)
- [Cell Culture](#)

Anti-IL9 Rabbit Monoclonal Antibody - Images



Western blot analysis of IL9 in Recombinant Human IL9 protein cell lysate.