

**Anti-Cathepsin H Rabbit Monoclonal Antibody**  
Catalog # ABO16634**Specification****Anti-Cathepsin H Rabbit Monoclonal Antibody - Product Information**

|                   |                        |
|-------------------|------------------------|
| Application       | WB, IHC                |
| Primary Accession | <a href="#">P09668</a> |
| Host              | Rabbit                 |
| Isotype           | Rabbit IgG             |
| Reactivity        | Human                  |
| Clonality         | Monoclonal             |
| Format            | Liquid                 |

**Description**

Anti-Cathepsin H Rabbit Monoclonal Antibody . Tested in WB, IHC, ICC/IF applications. This antibody reacts with Human.

**Anti-Cathepsin H Rabbit Monoclonal Antibody - Additional Information**

**Gene ID** 1512

**Other Names**

Pro-cathepsin H, Cathepsin H mini chain, Cathepsin H, 3.4.22.16, Cathepsin H heavy chain, Cathepsin H light chain, CTSH, CPSB

**Application Details**

WB 1:500-1:2000<br>IHC 1:50-1:200<br>ICC/IF 1:50-1:200

**Contents**

Rabbit IgG in phosphate buffered saline, pH 7.4, 150mM NaCl, 0.02% sodium azide and 50% glycerol, 0.4-0.5mg/ml BSA.

**Immunogen**

A synthesized peptide derived from human Cathepsin H

**Purification**

Affinity-chromatography

**Storage**

**Store at -20°C for one year. For short term storage and frequent use, store at 4°C for up to one month. Avoid repeated freeze-thaw cycles.**

**Anti-Cathepsin H Rabbit Monoclonal Antibody - Protein Information**

**Name** CTSH

**Synonyms** CPSB

**Function**

Important for the overall degradation of proteins in lysosomes.

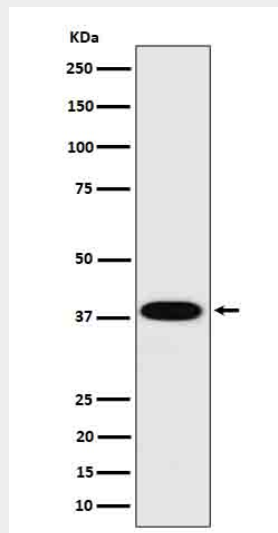
**Cellular Location**

Lysosome.

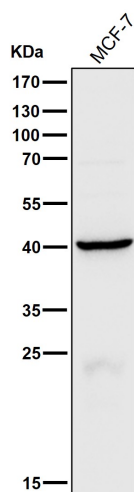
**Anti-Cathepsin H Rabbit Monoclonal Antibody - Protocols**

Provided below are standard protocols that you may find useful for product applications.

- [Western Blot](#)
- [Blocking Peptides](#)
- [Dot Blot](#)
- [Immunohistochemistry](#)
- [Immunofluorescence](#)
- [Immunoprecipitation](#)
- [Flow Cytometry](#)
- [Cell Culture](#)

**Anti-Cathepsin H Rabbit Monoclonal Antibody - Images**

Western blot analysis of Cathepsin H in HepG2 cell lysate.



All lanes use the Antibody at 1:1K dilution for 1 hour at room temperature.