

**Anti-RalA Rabbit Monoclonal Antibody**  
Catalog # ABO16633**Specification**

---

**Anti-RalA Rabbit Monoclonal Antibody - Product Information**

Application	WB, IHC
Primary Accession	<a href="#">P11233</a>
Host	Rabbit
Isotype	Rabbit IgG
Reactivity	Human
Clonality	Monoclonal
Format	Liquid

**Description**

Anti-RalA Rabbit Monoclonal Antibody . Tested in WB, IHC applications. This antibody reacts with Human.

**Anti-RalA Rabbit Monoclonal Antibody - Additional Information**

**Gene ID** 5898

**Other Names**

Ras-related protein Ral-A, 3.6.5.2, RALA, RAL

**Application Details**

WB 1:500-1:2000<br>IHC 1:50-1:200

**Contents**

Rabbit IgG in phosphate buffered saline, pH 7.4, 150mM NaCl, 0.02% sodium azide and 50% glycerol, 0.4-0.5mg/ml BSA.

**Immunogen**

A synthesized peptide derived from human RalA

**Purification**

Affinity-chromatography

**Storage**

**Store at -20°C for one year. For short term storage and frequent use, store at 4°C for up to one month. Avoid repeated freeze-thaw cycles.**

**Anti-RalA Rabbit Monoclonal Antibody - Protein Information**

**Name** RALA

**Synonyms** RAL

**Function**

Multifunctional GTPase involved in a variety of cellular processes including gene expression, cell migration, cell proliferation, oncogenic transformation and membrane trafficking. Accomplishes its multiple functions by interacting with distinct downstream effectors (PubMed:<a href="http://www.uniprot.org/citations/18756269" target="\_blank">18756269</a>, PubMed:<a href="http://www.uniprot.org/citations/19306925" target="\_blank">19306925</a>, PubMed:<a href="http://www.uniprot.org/citations/20005108" target="\_blank">20005108</a>, PubMed:<a href="http://www.uniprot.org/citations/21822277" target="\_blank">21822277</a>, PubMed:<a href="http://www.uniprot.org/citations/30500825" target="\_blank">30500825</a>). Acts as a GTP sensor for GTP-dependent exocytosis of dense core vesicles. The RALA- exocyst complex regulates integrin-dependent membrane raft exocytosis and growth signaling (PubMed:<a href="http://www.uniprot.org/citations/20005108" target="\_blank">20005108</a>). Key regulator of LPAR1 signaling and competes with GRK2 for binding to LPAR1 thus affecting the signaling properties of the receptor. Required for anchorage- independent proliferation of transformed cells (PubMed:<a href="http://www.uniprot.org/citations/19306925" target="\_blank">19306925</a>). During mitosis, supports the stabilization and elongation of the intracellular bridge between dividing cells. Cooperates with EXOC2 to recruit other components of the exocyst to the early midbody (PubMed:<a href="http://www.uniprot.org/citations/18756269" target="\_blank">18756269</a>). During mitosis, also controls mitochondrial fission by recruiting to the mitochondrion RALBP1, which mediates the phosphorylation and activation of DNMI1 by the mitotic kinase cyclin B- CDK1 (PubMed:<a href="http://www.uniprot.org/citations/21822277" target="\_blank">21822277</a>).

#### Cellular Location

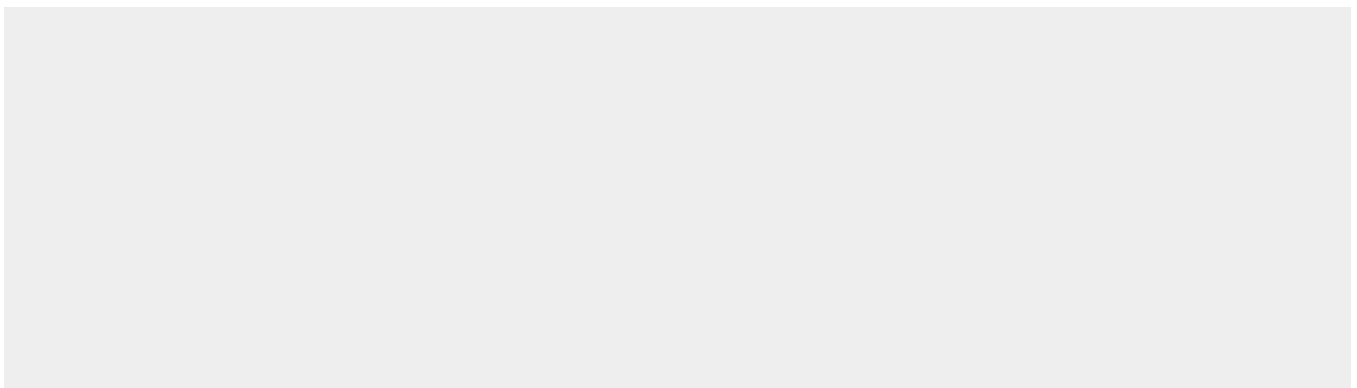
Cell membrane; Lipid-anchor; Cytoplasmic side. Cleavage furrow. Midbody, Midbody ring. Mitochondrion. Note=Predominantly at the cell surface in the absence of LPA. In the presence of LPA, colocalizes with LPAR1 and LPAR2 in endocytic vesicles (PubMed:19306925). May colocalize with CNTRL/centriolin at the midbody ring (PubMed:16213214). However, localization at the midbody at late cytokinesis was not confirmed (PubMed:18756269). Relocalizes to the mitochondrion during mitosis where it regulates mitochondrial fission (PubMed:21822277)

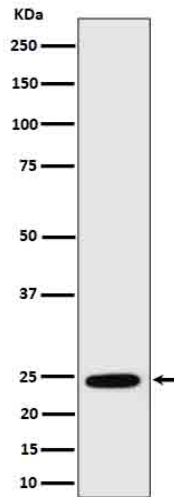
#### Anti-RalA Rabbit Monoclonal Antibody - Protocols

Provided below are standard protocols that you may find useful for product applications.

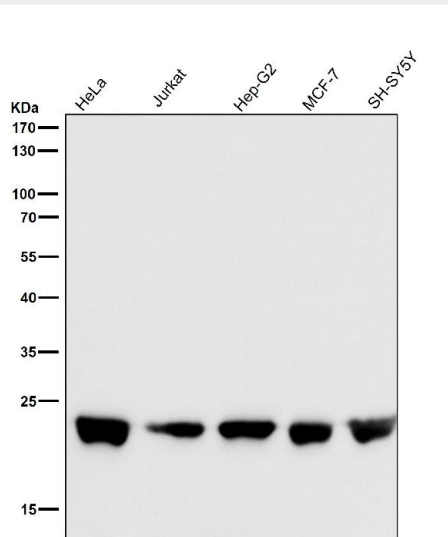
- [Western Blot](#)
- [Blocking Peptides](#)
- [Dot Blot](#)
- [Immunohistochemistry](#)
- [Immunofluorescence](#)
- [Immunoprecipitation](#)
- [Flow Cytometry](#)
- [Cell Culture](#)

#### Anti-RalA Rabbit Monoclonal Antibody - Images





Western blot analysis of RalA in MCF7 cell lysate.



All lanes use the Antibody at 1:5K dilution for 1 hour at room temperature.