

## Anti-CD275 Rabbit Monoclonal Antibody Catalog # ABO16632

### Specification

---

#### Anti-CD275 Rabbit Monoclonal Antibody - Product Information

Application	WB
Primary Accession	<a href="#">O75144</a>
Host	Rabbit
Isotype	Rabbit IgG
Reactivity	Human
Clonality	Monoclonal
Format	Liquid

#### Description

Anti-CD275 Rabbit Monoclonal Antibody . Tested in WB applications. This antibody reacts with Human.

#### Anti-CD275 Rabbit Monoclonal Antibody - Additional Information

Gene ID 23308

#### Other Names

ICOS ligand, B7 homolog 2, B7-H2, B7-like protein GI50, B7-related protein 1, B7RP-1, CD275, ICOSLG, B7H2, B7RP1, ICOSL, KIAA0653

#### Application Details

WB 1:500-1:2000

#### Contents

Rabbit IgG in phosphate buffered saline, pH 7.4, 150mM NaCl, 0.02% sodium azide and 50% glycerol, 0.4-0.5mg/ml BSA.

#### Immunogen

A synthesized peptide derived from human CD275

#### Purification

Affinity-chromatography

Storage

**Store at -20°C for one year. For short term storage and frequent use, store at 4°C for up to one month. Avoid repeated freeze-thaw cycles.**

#### Anti-CD275 Rabbit Monoclonal Antibody - Protein Information

Name ICOSLG

#### Function

Ligand for the T-cell-specific cell surface receptor ICOS. Acts as a costimulatory signal for T-cell

proliferation and cytokine secretion (PubMed:<a href="http://www.uniprot.org/citations/11007762" target="\_blank">11007762</a>, PubMed:<a href="http://www.uniprot.org/citations/11023515" target="\_blank">11023515</a>, PubMed:<a href="http://www.uniprot.org/citations/30498080" target="\_blank">30498080</a>). Also induces B-cell proliferation and differentiation into plasma cells. Could play an important role in mediating local tissue responses to inflammatory conditions, as well as in modulating the secondary immune response by co-stimulating memory T-cell function (By similarity). In endothelial cells, required for proper neutrophil transmigration in response to chemoattractants, such as CXCL8/IL8 or N-formyl-methionyl peptides (fMLP) (PubMed:<a href="http://www.uniprot.org/citations/30498080" target="\_blank">30498080</a>).

#### Cellular Location

Cell membrane; Single-pass type I membrane protein

#### Tissue Location

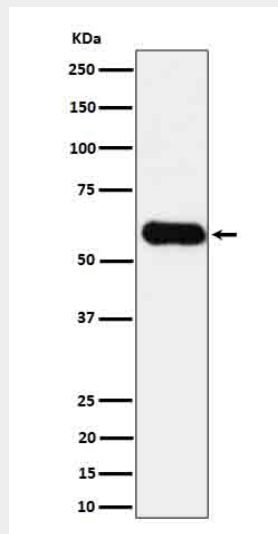
Expressed on peripheral blood B-cells and monocytes, as well as on monocyte-derived dendritic cells (at protein level). [Isoform 2]: Detected only in lymph nodes, leukocytes and spleen. Expressed on activated monocytes and dendritic cells.

### Anti-CD275 Rabbit Monoclonal Antibody - Protocols

Provided below are standard protocols that you may find useful for product applications.

- [Western Blot](#)
- [Blocking Peptides](#)
- [Dot Blot](#)
- [Immunohistochemistry](#)
- [Immunofluorescence](#)
- [Immunoprecipitation](#)
- [Flow Cytometry](#)
- [Cell Culture](#)

### Anti-CD275 Rabbit Monoclonal Antibody - Images



Western blot analysis of CD275 in HUVEC cell lysate.