

Anti-TCEB2 Rabbit Monoclonal Antibody Catalog # ABO16553

Specification

Anti-TCEB2 Rabbit Monoclonal Antibody - Product Information

| | |
|-------------------|------------------------|
| Application | WB |
| Primary Accession | Q15370 |
| Host | Rabbit |
| Isotype | IgG |
| Reactivity | Human |
| Clonality | Monoclonal |
| Format | Liquid |

Description

Anti-TCEB2 Rabbit Monoclonal Antibody . Tested in WB application. This antibody reacts with Human.

Anti-TCEB2 Rabbit Monoclonal Antibody - Additional Information

Gene ID 6923

Other Names

Elongin-B, EloB, Elongin 18 kDa subunit, RNA polymerase II transcription factor SIII subunit B, SIII p18, Transcription elongation factor B polypeptide 2, ELOB (http://www.genenames.org/cgi-bin/gene_symbol_report?hgnc_id=11619)>HGNC:11619), TCEB2

Calculated MW

16 kDa KDa

Application Details

WB 1:500-1:2000

Contents

Rabbit IgG in phosphate buffered saline, pH 7.4, 150mM NaCl, 0.02% sodium azide and 50% glycerol, 0.4-0.5mg/ml BSA.

Immunogen

A synthesized peptide derived from human TCEB2

Purification

Affinity-chromatography

Storage

Store at -20°C for one year. For short term storage and frequent use, store at 4°C for up to one month. Avoid repeated freeze-thaw cycles.

Anti-TCEB2 Rabbit Monoclonal Antibody - Protein Information

Name ELOB ([HGNC:11619](#))

Synonyms TCEB2

Function

SIII, also known as elongin, is a general transcription elongation factor that increases the RNA polymerase II transcription elongation past template-encoded arresting sites. Subunit A is transcriptionally active and its transcription activity is strongly enhanced by binding to the dimeric complex of the SIII regulatory subunits B and C (elongin BC complex) (PubMed:7638163). In embryonic stem cells, the elongin BC complex is recruited by EPOP to Polycomb group (PcG) target genes in order generate genomic region that display both active and repressive chromatin properties, an important feature of pluripotent stem cells (By similarity).

Cellular Location

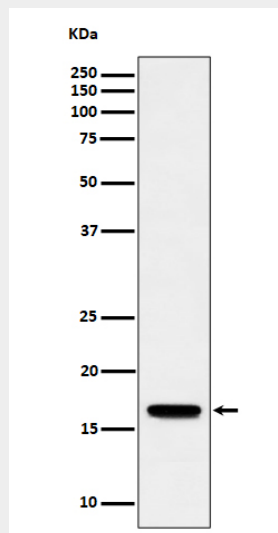
Nucleus.

Anti-TCEB2 Rabbit Monoclonal Antibody - Protocols

Provided below are standard protocols that you may find useful for product applications.

- [Western Blot](#)
- [Blocking Peptides](#)
- [Dot Blot](#)
- [Immunohistochemistry](#)
- [Immunofluorescence](#)
- [Immunoprecipitation](#)
- [Flow Cytometry](#)
- [Cell Culture](#)

Anti-TCEB2 Rabbit Monoclonal Antibody - Images



Western blot analysis of TCEB2 expression in Jurkat cell lysate.