

Anti-TCTEX1 Rabbit Monoclonal Antibody
Catalog # ABO16548**Specification**

Anti-TCTEX1 Rabbit Monoclonal Antibody - Product Information

Application	WB, IHC, IF, ICC, IP
Primary Accession	P63172
Host	Rabbit
Isotype	IgG
Reactivity	Human, Mouse
Clonality	Monoclonal
Format	Liquid

Description

Anti-TCTEX1 Rabbit Monoclonal Antibody . Tested in WB, IHC, ICC/IF, IP applications. This antibody reacts with Human, Mouse.

Anti-TCTEX1 Rabbit Monoclonal Antibody - Additional Information

Gene ID 6993

Other Names

Dynein light chain Tctex-type 1, Protein CW-1, T-complex testis-specific protein 1 homolog, DYNLT1, TCTEL1, TCTEX-1, TCTEX1

Calculated MW

12 kDa KDa

Application Details

WB 1:500-1:2000
IHC 1:50-1:200
ICC/IF 1:50-1:200
IP 1:50

Contents

Rabbit IgG in phosphate buffered saline, pH 7.4, 150mM NaCl, 0.02% sodium azide and 50% glycerol, 0.4-0.5mg/ml BSA.

Immunogen

A synthesized peptide derived from human TCTEX1

Purification

Affinity-chromatography

Storage

Store at -20°C for one year. For short term storage and frequent use, store at 4°C for up to one month. Avoid repeated freeze-thaw cycles.

Anti-TCTEX1 Rabbit Monoclonal Antibody - Protein Information

Name DYNLT1

Synonyms TCTEL1, TCTEX-1, TCTEX1

Function

Acts as one of several non-catalytic accessory components of the cytoplasmic dynein 1 complex that are thought to be involved in linking dynein to cargos and to adapter proteins that regulate dynein function. Cytoplasmic dynein 1 acts as a motor for the intracellular retrograde motility of vesicles and organelles along microtubules. Binds to transport cargos and is involved in apical cargo transport such as rhodopsin-bearing vesicles in polarized epithelia. May also be a accessory component of axonemal dynein. (Microbial infection) Is involved in intracellular targeting of D-type retrovirus gag polyproteins to the cytoplasmic assembly site.

Cellular Location

Golgi apparatus. Cytoplasm. Cytoplasm, cytoskeleton, spindle Note=Localizes to mitotic spindles.

Tissue Location

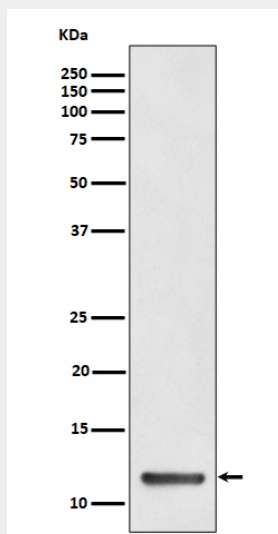
Expressed in heart, placenta, skeletal muscle kidney, pancreas, spleen, prostate, testis, ovary, ileum and colon Expressed in lung endothelial and smooth muscle cells (at protein level).

Anti-TCTEX1 Rabbit Monoclonal Antibody - Protocols

Provided below are standard protocols that you may find useful for product applications.

- [Western Blot](#)
- [Blocking Peptides](#)
- [Dot Blot](#)
- [Immunohistochemistry](#)
- [Immunofluorescence](#)
- [Immunoprecipitation](#)
- [Flow Cytometry](#)
- [Cell Culture](#)

Anti-TCTEX1 Rabbit Monoclonal Antibody - Images



Western blot analysis of TCTEX1 expression in HeLa cell lysate.