

Anti-Serine racemase Rabbit Monoclonal Antibody
Catalog # ABO16537

Specification

Anti-Serine racemase Rabbit Monoclonal Antibody - Product Information

| | |
|-------------------|------------------------|
| Application | WB |
| Primary Accession | Q9GZT4 |
| Host | Rabbit |
| Isotype | IgG |
| Reactivity | Human |
| Clonality | Monoclonal |
| Format | Liquid |

Description

Anti-Serine racemase Rabbit Monoclonal Antibody . Tested in WB application. This antibody reacts with Human.

Anti-Serine racemase Rabbit Monoclonal Antibody - Additional Information

Gene ID 63826

Other Names

Serine racemase, 5.1.1.18, D-serine ammonia-lyase, D-serine dehydratase, 4.3.1.18, SRR

Calculated MW

37 kDa KDa

Application Details

WB 1:500-1:2000

Contents

Rabbit IgG in phosphate buffered saline, pH 7.4, 150mM NaCl, 0.02% sodium azide and 50% glycerol, 0.4-0.5mg/ml BSA.

Immunogen

A synthesized peptide derived from human Serine racemase

Purification

Affinity-chromatography

Storage

Store at -20°C for one year. For short term storage and frequent use, store at 4°C for up to one month. Avoid repeated freeze-thaw cycles.

Anti-Serine racemase Rabbit Monoclonal Antibody - Protein Information

Name SRR

Function

Catalyzes the synthesis of D-serine from L-serine (PubMed:20106978, PubMed:23391306, PubMed:29277459). D-serine is a key coagonist with glutamate at NMDA receptors. Has dehydratase activity towards both L-serine and D-serine (By similarity).

Tissue Location

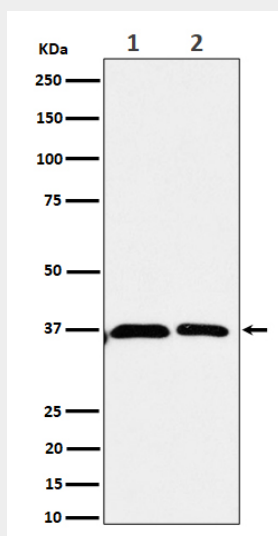
Expressed in the cerebellum, hippocampus, dorsolateral prefrontal cortex, and in motor neurons and glial cells of the lumbar spinal cord (at protein level) (PubMed:17880399, PubMed:24138986). Increased in the dorsolateral prefrontal cortex of schizophrenic patients (at protein level) (PubMed:17880399). Brain: expressed at high levels in hippocampus and corpus callosum, intermediate levels in substantia nigra and caudate, and low levels in amygdala, thalamus, and subthalamic nuclei (PubMed:15193426). Expressed in heart, skeletal muscle, kidney, and liver (PubMed:15193426)

Anti-Serine racemase Rabbit Monoclonal Antibody - Protocols

Provided below are standard protocols that you may find useful for product applications.

- [Western Blot](#)
- [Blocking Peptides](#)
- [Dot Blot](#)
- [Immunohistochemistry](#)
- [Immunofluorescence](#)
- [Immunoprecipitation](#)

Anti-Serine racemase Rabbit Monoclonal Antibody - Images



Western blot analysis of Serine racemase expression in (1) 293 cell lysate; (2) U-87 MG cell lysate.