

Anti-RPS8 Rabbit Monoclonal Antibody
Catalog # ABO16536**Specification****Anti-RPS8 Rabbit Monoclonal Antibody - Product Information**

Application	WB, IF, ICC, IP, FC
Primary Accession	P62241
Host	Rabbit
Isotype	IgG
Reactivity	Rat, Human, Mouse
Clonality	Monoclonal
Format	Liquid

Description

Anti-RPS8 Rabbit Monoclonal Antibody . Tested in WB, ICC/IF, IP, Flow Cytometry applications. This antibody reacts with Human, Mouse, Rat.

Anti-RPS8 Rabbit Monoclonal Antibody - Additional Information

Gene ID 6202

Other Names

Small ribosomal subunit protein eS8, 40S ribosomal protein S8, RPS8 ([HGNC:10441](http://www.genenames.org/cgi-bin/gene_symbol_report?hgnc_id=10441))

Calculated MW

24 kDa KDa

Application Details

WB 1:500-1:2000
ICC/IF 1:50-1:200
IP 1:50
FC 1:50

Contents

Rabbit IgG in phosphate buffered saline, pH 7.4, 150mM NaCl, 0.02% sodium azide and 50% glycerol, 0.4-0.5mg/ml BSA.

Immunogen

A synthesized peptide derived from human RPS8

Purification

Affinity-chromatography

Storage

Store at -20°C for one year. For short term storage and frequent use, store at 4°C for up to one month. Avoid repeated freeze-thaw cycles.

Anti-RPS8 Rabbit Monoclonal Antibody - Protein Information

Name RPS8 ([HGNC:10441](#))

Function

Component of the small ribosomal subunit (PubMed:23636399). The ribosome is a large ribonucleoprotein complex responsible for the synthesis of proteins in the cell (PubMed:23636399). Part of the small subunit (SSU) processome, first precursor of the small eukaryotic ribosomal subunit. During the assembly of the SSU processome in the nucleolus, many ribosome biogenesis factors, an RNA chaperone and ribosomal proteins associate with the nascent pre-rRNA and work in concert to generate RNA folding, modifications, rearrangements and cleavage as well as targeted degradation of pre-ribosomal RNA by the RNA exosome (PubMed:34516797).

Cellular Location

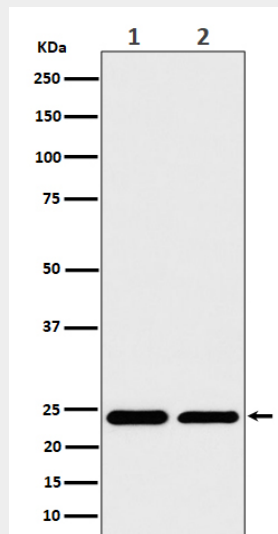
Cytoplasm. Membrane; Lipid-anchor. Nucleus, nucleolus. Note=Localized in cytoplasmic mRNP granules containing untranslated mRNAs.

Anti-RPS8 Rabbit Monoclonal Antibody - Protocols

Provided below are standard protocols that you may find useful for product applications.

- [Western Blot](#)
- [Blocking Peptides](#)
- [Dot Blot](#)
- [Immunohistochemistry](#)
- [Immunofluorescence](#)
- [Immunoprecipitation](#)
- [Flow Cytometry](#)
- [Cell Culture](#)

Anti-RPS8 Rabbit Monoclonal Antibody - Images



Western blot analysis of RPS8 expression in (1) 293 cell lysate; (2) RAW 264.7 cell lysate.

